

DMCI HOMES



KAI GARDEN

RESIDENCES





Type of Development	HRB
Residential Floors	41 / 39
Number of Buildings	3
Number of Units	2,953

THE LOGO

Serves as an entrance gate to exclusive living spaces



KAI GARDEN
RESIDENCES

Solid font signifies DMCI Homes' credibility in building

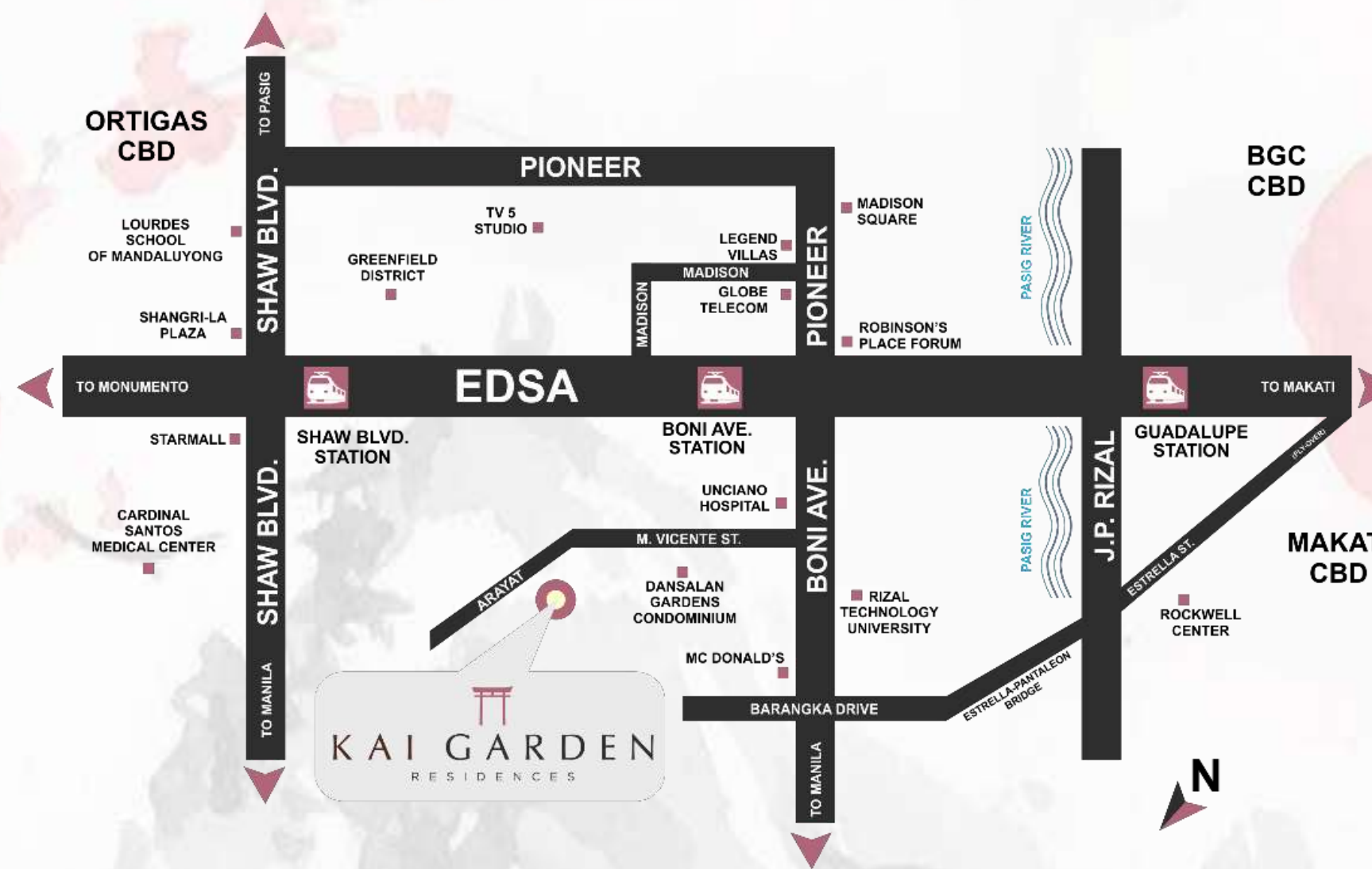
Font spacing represents generous layout and recreational area

KAI means earth, recovery, and worthy

LOCATION MAP



GETTING THERE



NEARBY ESTABLISHMENTS

Business Districts	Distance	Time
Robinsons Pioneer Business Center	2.2Km	20 mins.
Rockwell Business District	4 Km	20 mins.
Ortigas Business Center	3.3Km	16 mins.
Ayala Business District	4.8Km	25 mins.



NEARBY ESTABLISHMENTS

Malls	Distance	Time
Domingo Guevara Commercial Strip	400m	5 mins.
S&R Shaw	1.6Km	10 mins.
Cherry Foodarama	1.8Km	10 mins.
500 Shaw Mall	1.7Km	10 mins.
Liberty Center	1.9Km	12 mins.
Shaw IT Mall	2.2Km	14 mins.
Robinsons Forum	2.2Km	16 mins.
SM Light Mall	2.4Km	13 mins.
Pioneer Center	2.5Km	11 mins.
Greenfields Shopping Center	2.7Km	12 mins.
Rockwell Power Plant	2.8Km	15 mins.
Shangri-La Mall	3.0Km	15 mins.
Starmall Shaw	3.0Km	14 mins.
SM Megamall	3.3Km	15 mins.
Estancia Mall	3.8Km	18 mins.



DMCI HOMES

KAI GARDEN
RESIDENCES

NEARBY ESTABLISHMENTS

Schools	Distance	Time
Rizal Technological University	450 m	6 mins.
City of Mandaluyong Science High School	1.5Km	8 mins.
Lourdes School of Mandaluyong	2.5Km	10 mins.
Colegio De Sta. Rosa	2.9Km	12 mins.
University of Asia and the Pacific	3.0Km	14 mins.
St. Paul College – Pasig City	3.5Km	26 mins.
Saint Pedro Poveda College	4.1Km	23 mins.



DMCI HOMES

KAI GARDEN
RESIDENCES

NEARBY ESTABLISHMENTS



Churches	Distance	Time
San Roque Parish	450 m	6 mins.
Archdiocesan Shrine of the Divine Mercy	1.5 km	19 mins.
Seventh Day Adventist Church	1.1 km	14 mins.
International Baptist Church	650 m	8 mins.
Our Lady of Fatima Parish	950 m	11 mins.
Victory Church	1.5 km	19 mins.

Hospitals	Distance	Time
Unciano General Hospital	240 m	3 mins.
VRP Medical Center	600 m	7 mins.

Police Stations	Distance	Time
Police Community Precinct No. 5	5.5 km	23 mins.
Chief of Police Office	2 km	8 mins.

Fire Stations	Distance	Time
Mandaluyong Fire Station	2 km	9 mins.
Mauway Fire Sub-Station	500 m	6 mins.
United Mandaluyong Fire Emergency	550 m	7 mins.



**VALUE PROPOSITION
STATEMENTS**

DMCI HOMES



KAI GARDEN
RESIDENCES

SELLING POINTS

K EY ACCESS POINTS

A MBIANCE

I NNOVATION

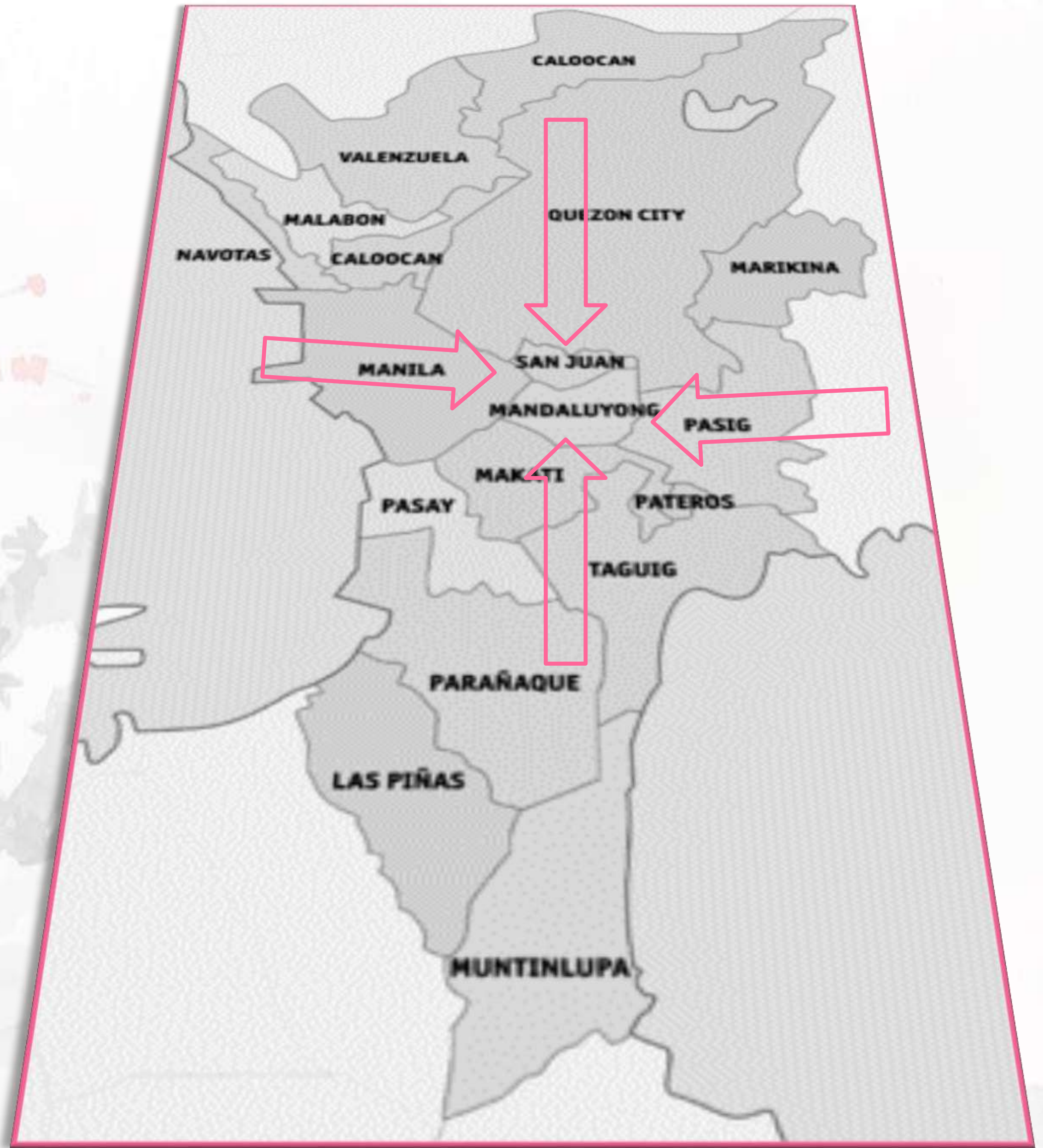
DMCI HOMES



KAI GARDEN
RESIDENCES

REASONS TO BELIEVE

KEY ACCESS POINTS



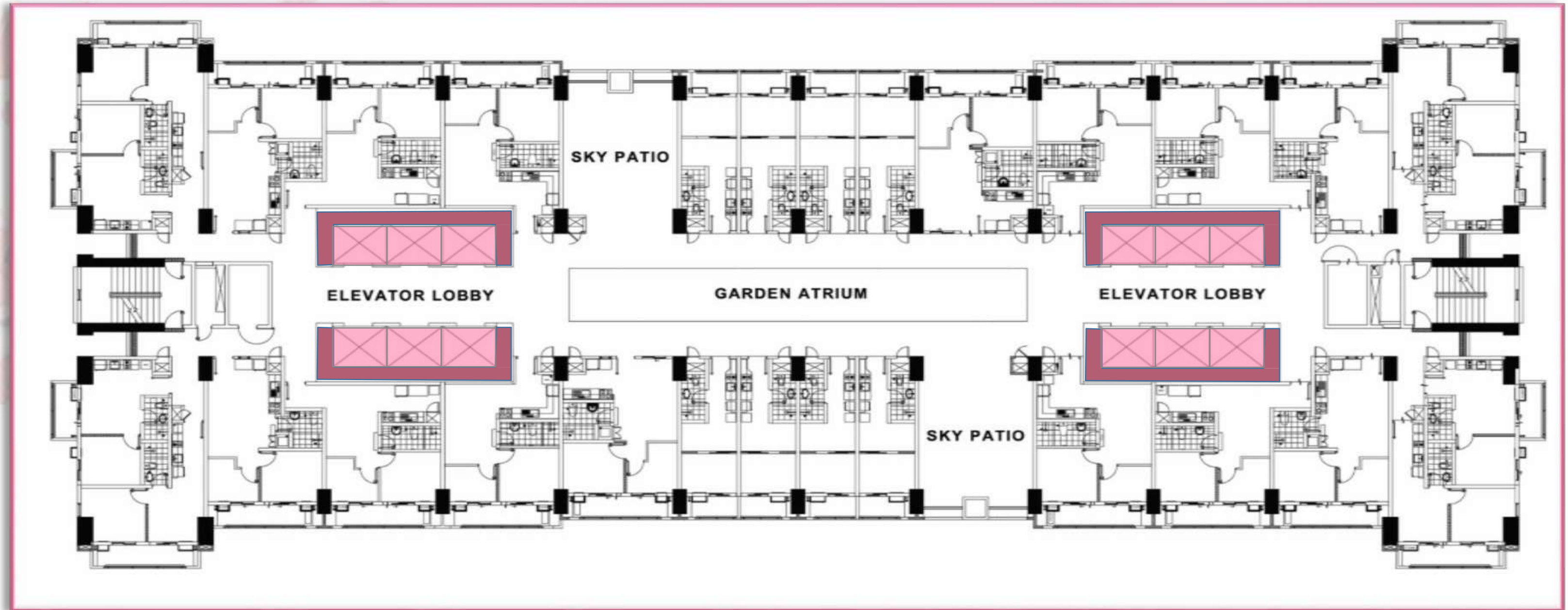
REASONS TO BELIEVE

A MBIANCE



REASONS TO BELIEVE

INNOVATION



REASONS TO BELIEVE

QUALITY GUARANTEED



DMCI HOMES



KAI GARDEN
RESIDENCES



PROJECT IN FOCUS

DMCI HOMES



KAI GARDEN
RESIDENCES



M. Vicente St., Mandaluyong City



3 High-Rise Buildings

39 Residential Floors (Sugi only)

1,028 Units (Sugi only) Japanese-Inspired Architecture



2 Amenity Levels



4 Basement Parking Levels

613 Parking Slots (Sugi only)

60% Parking Ratio (Sugi only)



PERSPECTIVES

DMCI HOMES



KAI GARDEN
RESIDENCES

17,082 sqm
LAND AREA



Site Development Plan



- Lap Pool
- Lounge Pool
- Kiddie Pool
- Basketball Court
- Play Area
- Picnic Area
- Garden
- Outdoor Fitness Area
- Jogging Path

Site Development Plan



Building Facade



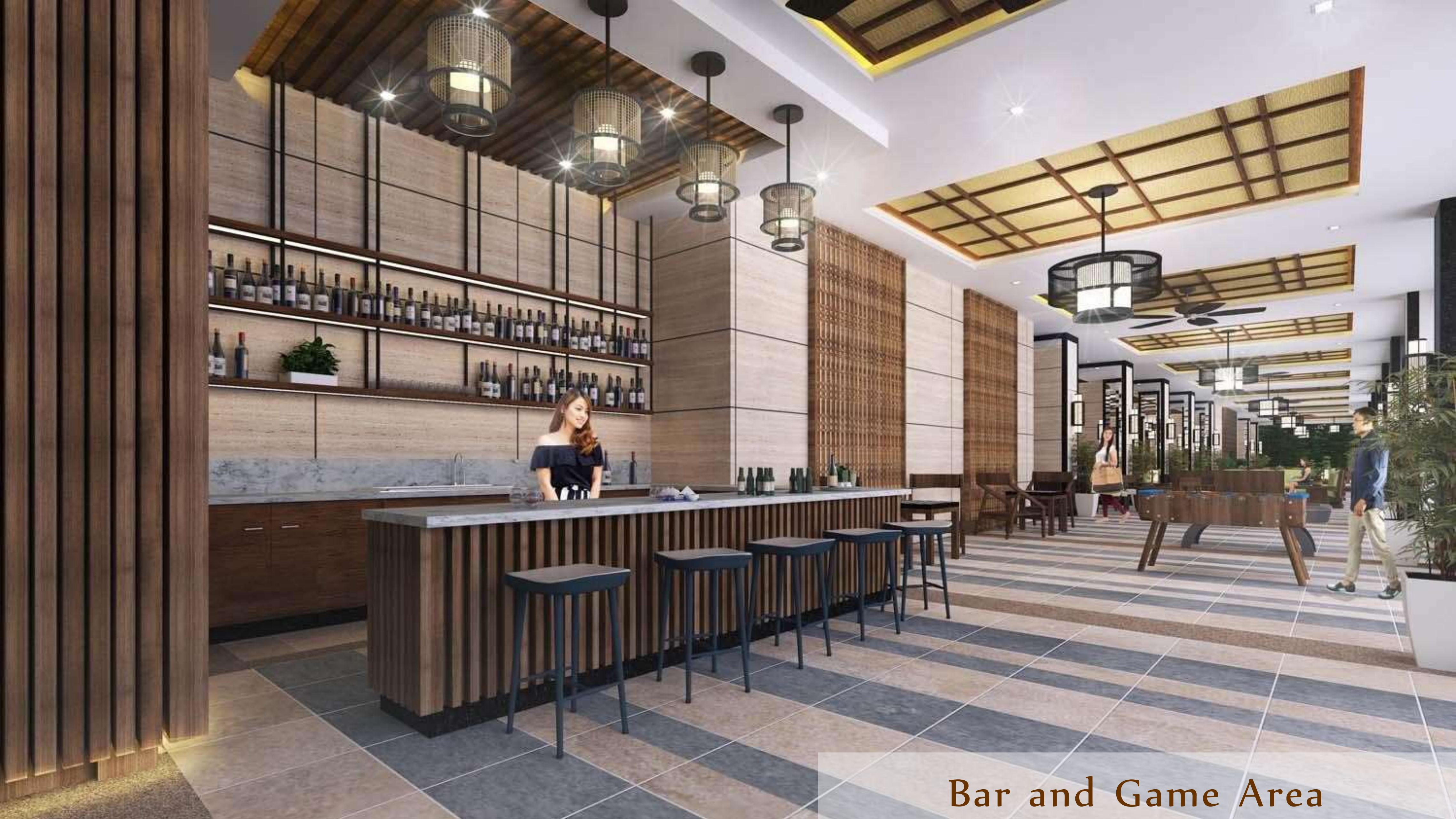
Building Façade (Night)



Entrance Gate



Reception Lobby



Bar and Game Area



Lounge Area



Atrium Level



Sky Patio



Amenity Core



Lap Pool



Lap Pool



Lounge Pool



Kiddie Pool



Garden Entrance



Garden



Garden



Garden



Garden



Garden



Garden



Garden



Garden



Jogging Path



OTHER AMENITIES



Audio-Visual Room



Fitness Gym



Roof Deck



Function Room

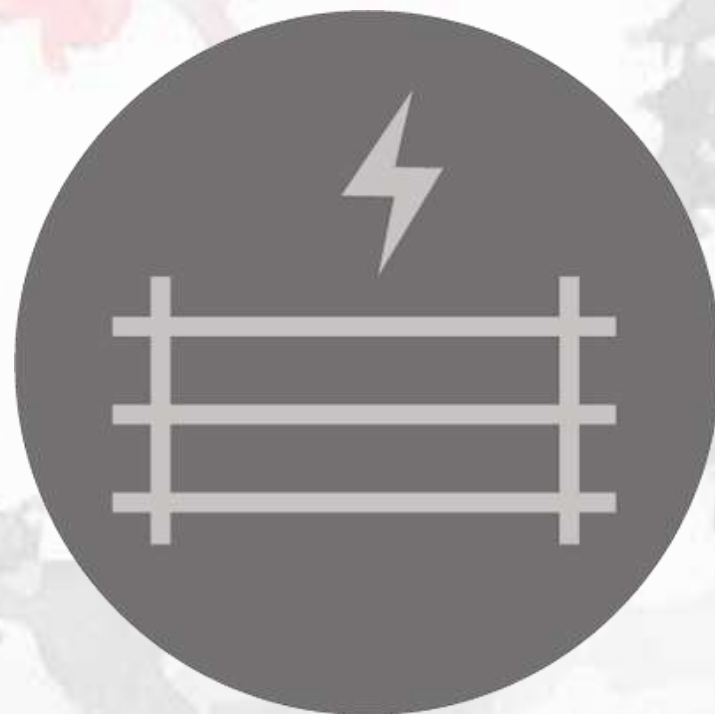
BUILDING FEATURES



CCTV Cameras
(for strategic areas)



**Full Back-up
Power**



**Electrified Perimeter
Fence**



**Fire detection, alarm, and
suppression systems**

BUILDING FEATURES



Lumiventt Technology



Landscaped Atriums



12 High-speed Elevators

BUILDING FEATURES



Mailbox Area



Water Refilling Station



Commercial Space



Laundry Station

UNIT FEATURES



Individual metered utilities

Provision for:



Telephone
Connection



Cable
Connection



Internet
Connection

PMO SERVICES



Guarded gate and entrance



Maintenance of landscaped areas



Roving security personnel



Taxi call-in service

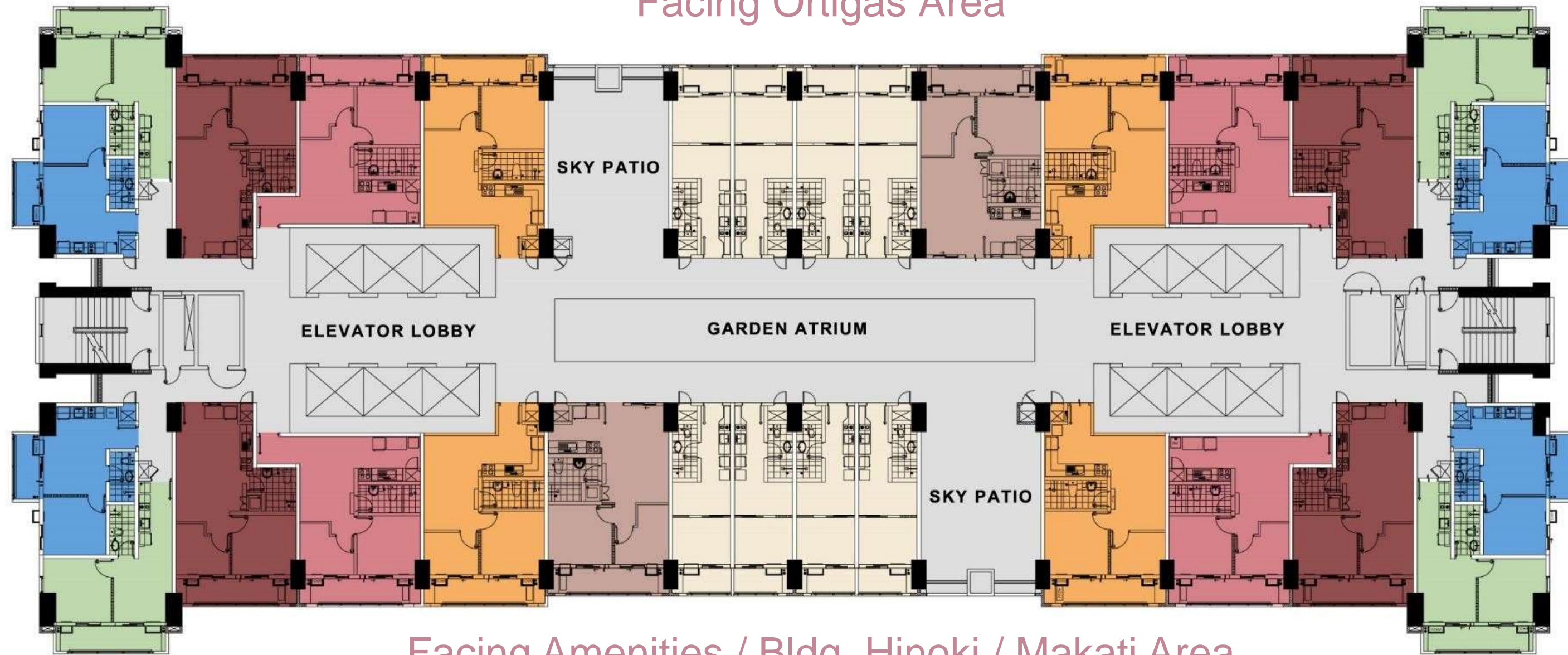
FLOORPLANS

DMCI HOMES



KAI GARDEN
RESIDENCES

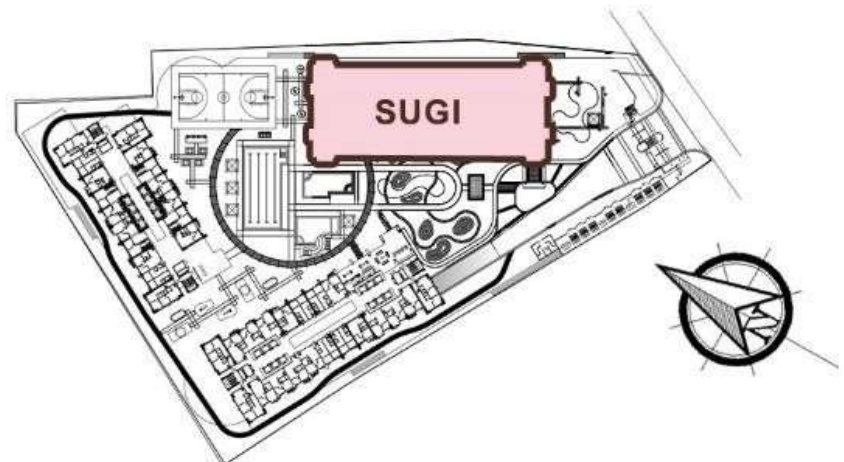
Facing Ortigas Area



Facing Amenities / Bldg. Hinoki / Makati Area

- 1 - Bedroom A Mid Unit**
 Approx. Gross Area: 28.00 sqm
- 1 - Bedroom B End Unit**
 Approx. Gross Area: 36.00 sqm
- 1 - Bedroom C End Unit**
 Approx. Gross Area: 39.50 sqm
- 2 - Bedroom A Inner Unit**
 Approx. Gross Area: 56.00 sqm
- 2 - Bedroom C Inner Unit**
 Approx. Gross Area: 52.50 sqm
- 2 - Bedroom D Inner Unit**
 Approx. Gross Area: 53.50 sqm
- 2 - Bedroom E Inner Unit**
 Approx. Gross Area: 53.50 sqm

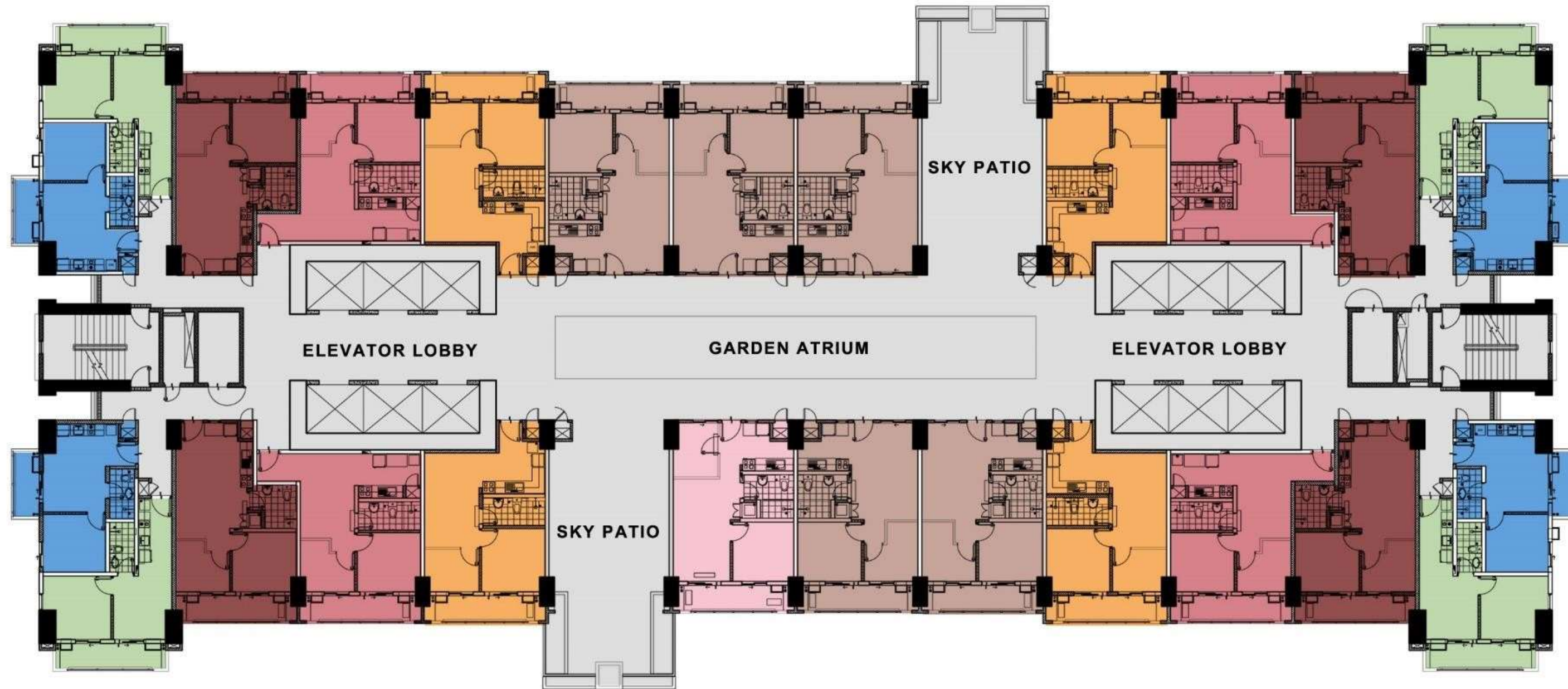
Note: Standard policy regarding request for tandem shall apply



2nd Floor Level Plan

- Plans reflected as visuals are not to scale.
- Actual configurations and features may vary per unit.
- Please check the specifications of the particular unit you are interested in purchasing with your seller.

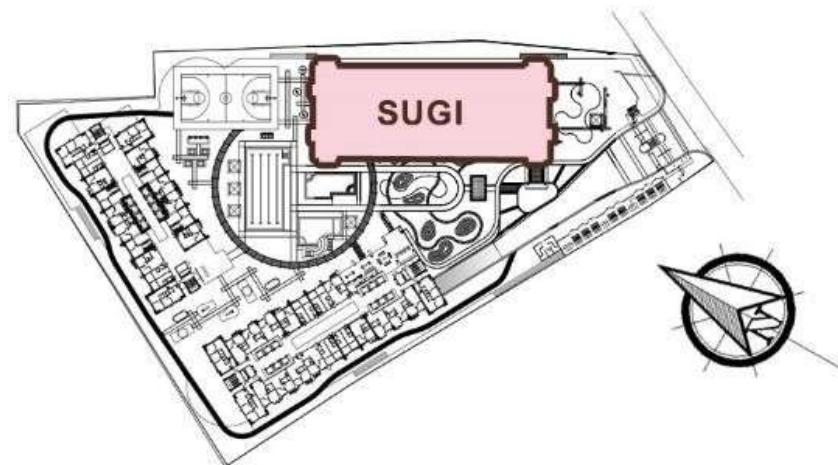
Facing Ortigas Area



Facing Amenities / Bldg. Hinoki / Makati Area

- 1 - Bedroom B End Unit
Approx. Gross Area: 36.00 sqm
- 1 - Bedroom C End Unit
Approx. Gross Area: 39.50 sqm
- 2 - Bedroom A Inner Unit
Approx. Gross Area: 56.00 sqm
- 2 - Bedroom B Inner Unit
Approx. Gross Area: 56.00 sqm
- 2 - Bedroom C Inner Unit
Approx. Gross Area: 52.50 sqm
- 2 - Bedroom D Inner Unit
Approx. Gross Area: 53.50 sqm
- 2 - Bedroom E Inner Unit
Approx. Gross Area: 53.50 sqm

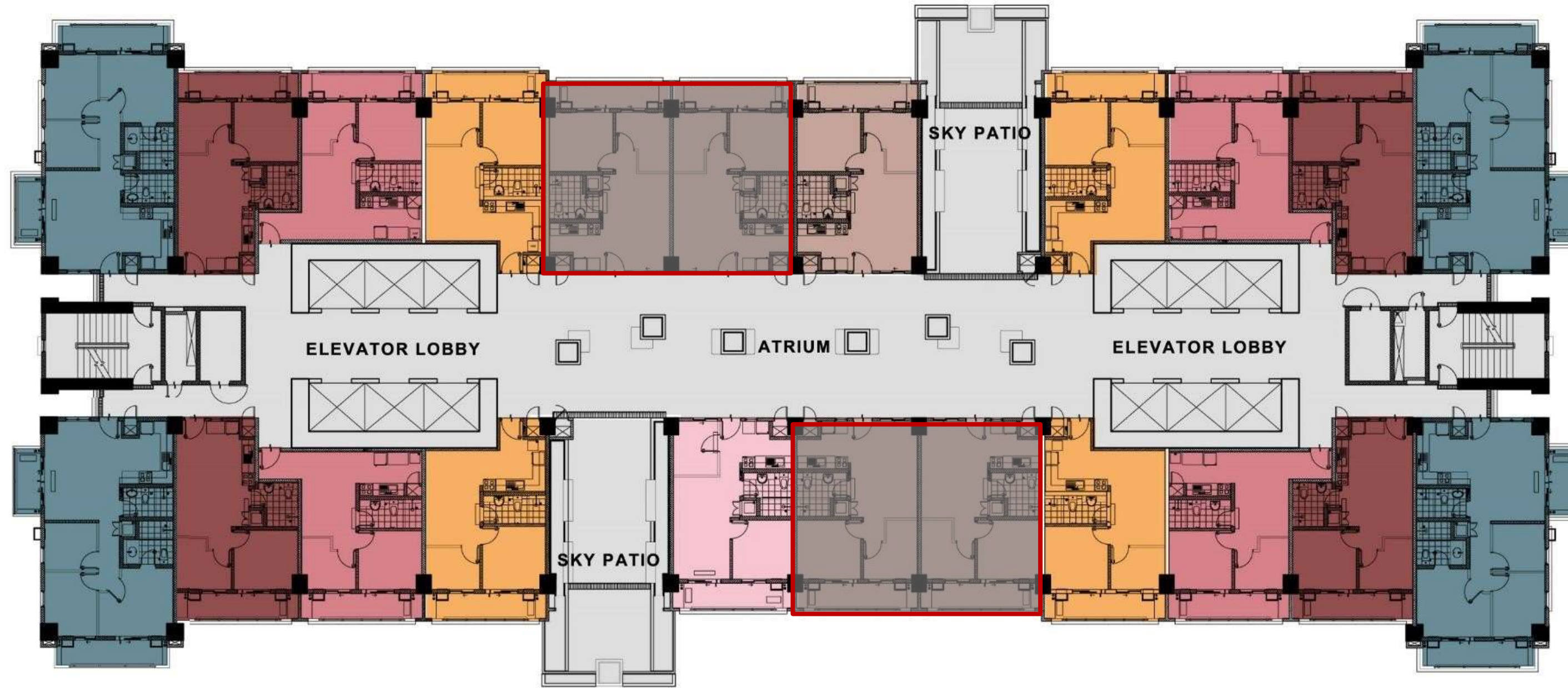
Note: Standard policy regarding request for tandem shall apply



7th, 18th & 28th Floor Level Plan

- Plans reflected as visuals are not to scale.
- Actual configurations and features may vary per unit.
- Please check the specifications of the particular unit you are interested in purchasing with your seller.

Facing Ortigas Area



Facing Amenities / Bldg. Hinoki / Makati Area

- | | | |
|--|--|---|
| 2 - Bedroom A Inner Unit
Approx. Gross Area: 56.00 sqm | 2 - Bedroom B Inner Unit
Approx. Gross Area: 56.00 sqm | 2- Bedroom C Inner Unit
Approx. Gross Area: 52.50 sqm |
| 2- Bedroom D Inner Unit
Approx. Gross Area: 53.50 sqm | 2- Bedroom E Inner Unit
Approx. Gross Area: 53.50 sqm | 3 - Bedroom End Unit
Approx. Gross Area: 81.50 sqm |

Note: Standard policy regarding request for tandem shall apply



38th Floor Level Plan

- Plans reflected as visuals are not to scale.
- Actual configurations and features may vary per unit.
- Please check the specifications of the particular unit you are interested in purchasing with your seller.



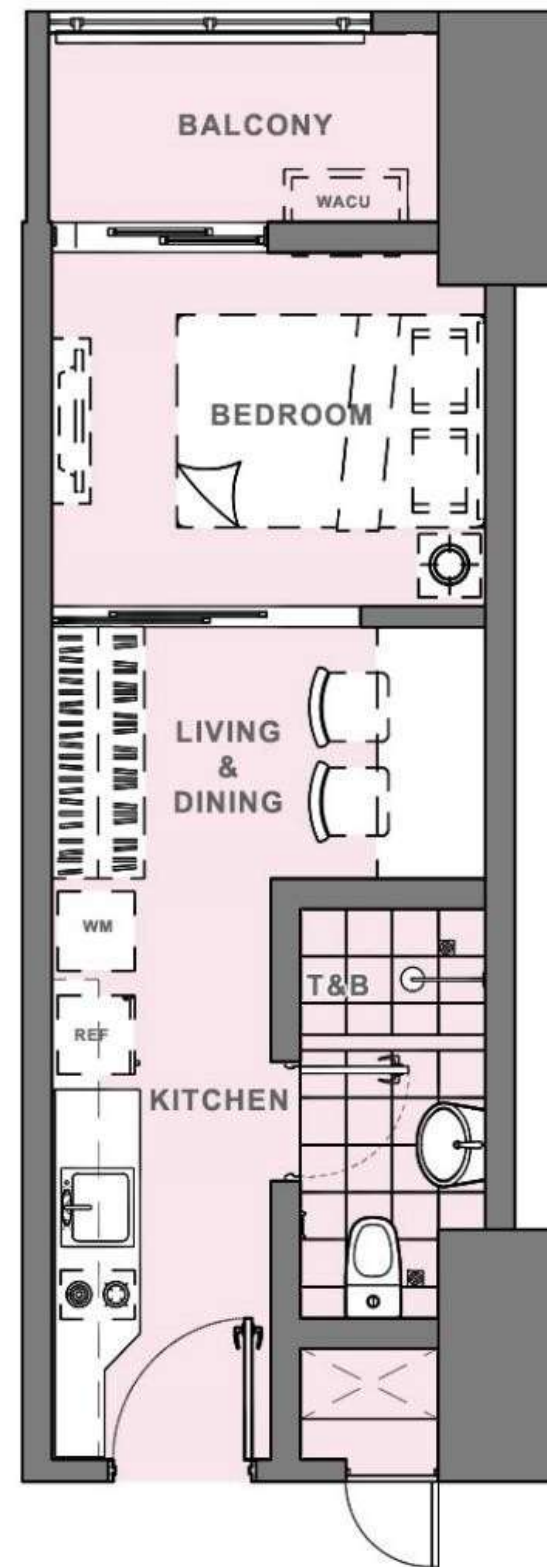
UNIT LAYOUTS

DMCI HOMES



KAI GARDEN
RESIDENCES

UNIT TYPE	1BR A
Location	Inner Unit
Floor Level	2F – 6F
# of units per floor	8



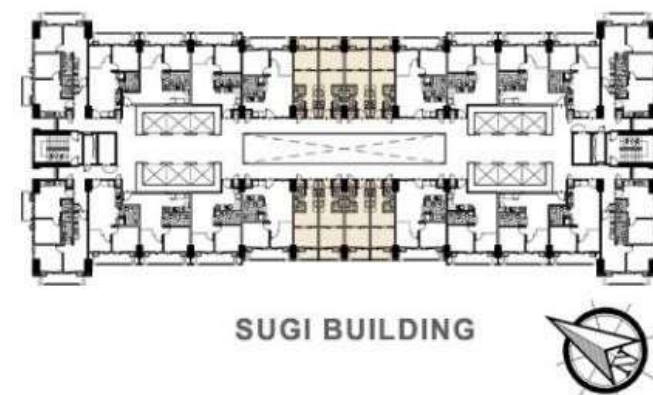
1- BEDROOM A INNER UNIT

AREA ALLOCATION

LIVING & DINING	5.40 sqm
KITCHEN	6.10
BEDROOM	7.50
TOILET & BATH	5.00
BALCONY	4.00

APPROX GROSS FLOOR AREA 28.00 sqm

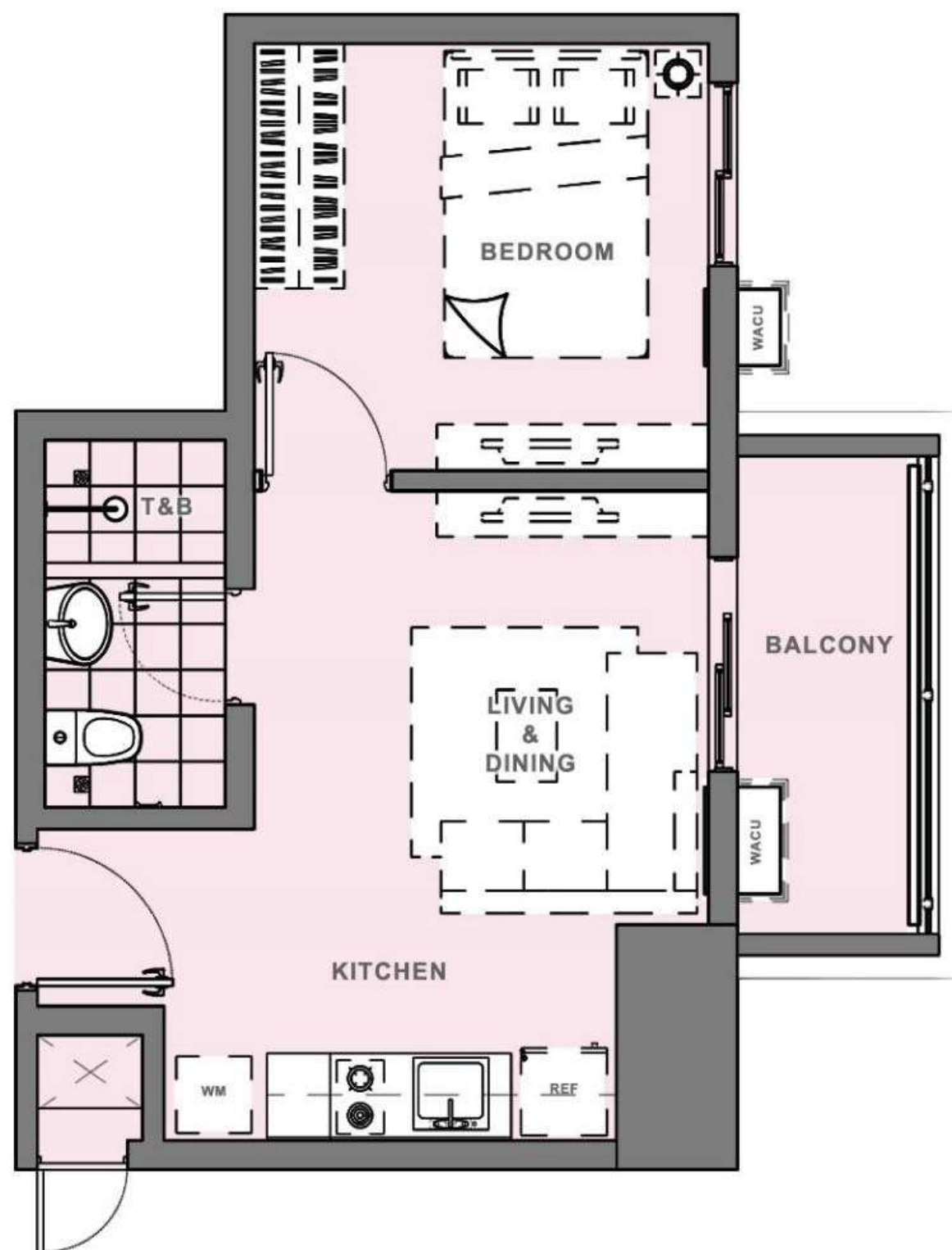
- DIMENSIONS AND AREAS MAY VARY BASED ON ACTUAL SITE CONDITON.
- FURNITURE AND APPLIANCES ARE NOT INCLUDED.
- KEY PLAN IS BASED ON TYPICAL FLOOR



EFFECTIVE AUGUST 2017

Floor plans reflected as visuals are not to scale. Actual configurations and features may vary per unit. Please check the unit specifications with your seller.

UNIT TYPE	1BR B
Location	End Unit
Floor Level	2F – 32F
# of units per floor	4



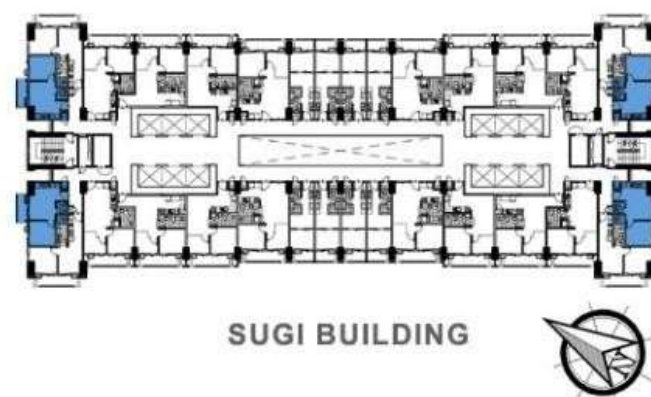
1- BEDROOM B END UNIT

AREA ALLOCATION

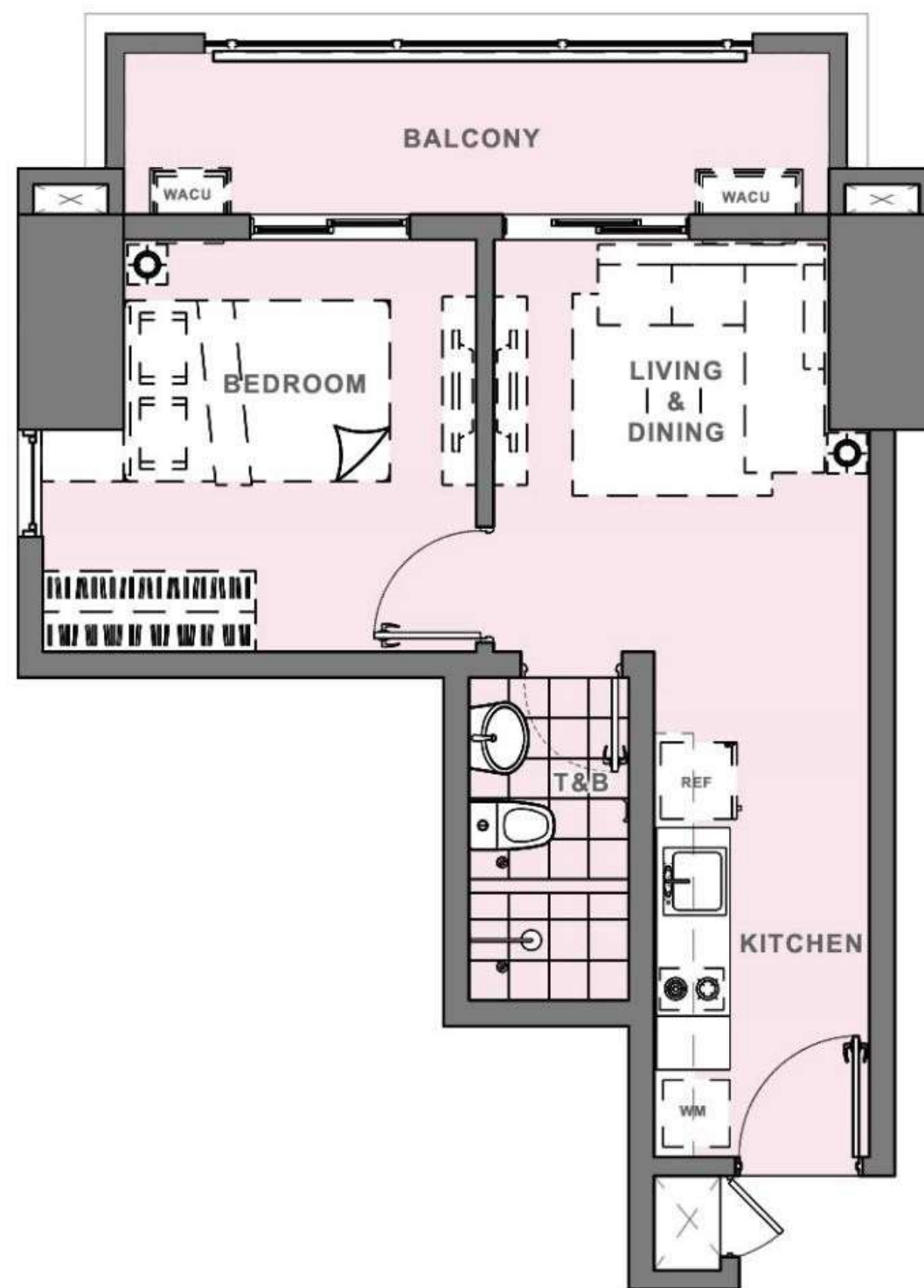
LIVING & DINING	10.90sqm
KITCHEN	7.40
BEDROOM	9.70
TOILET & BATH	3.50
BALCONY	4.50

APPROX GROSS FLOOR AREA 36.00 sqm

- DIMENSIONS AND AREAS MAY VARY BASED ON ACTUAL SITE CONDITON.
- FURNITURE AND APPLIANCES ARE NOT INCLUDED.
- KEY PLAN IS BASED ON TYPICAL FLOOR



UNIT TYPE	1BR C
Location	End Unit
Floor Level	2F – 32F
# of units per floor	4



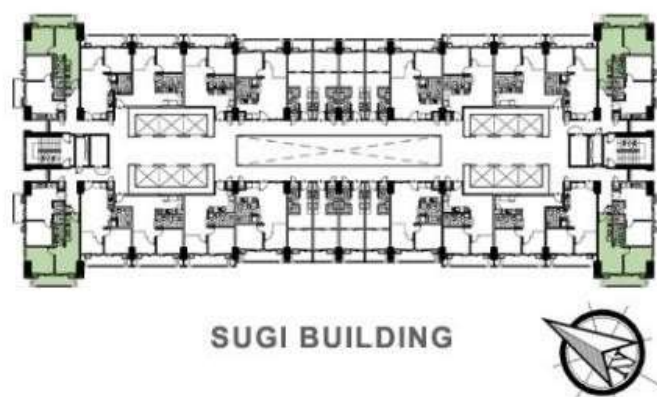
1- BEDROOM C END UNIT

AREA ALLOCATION

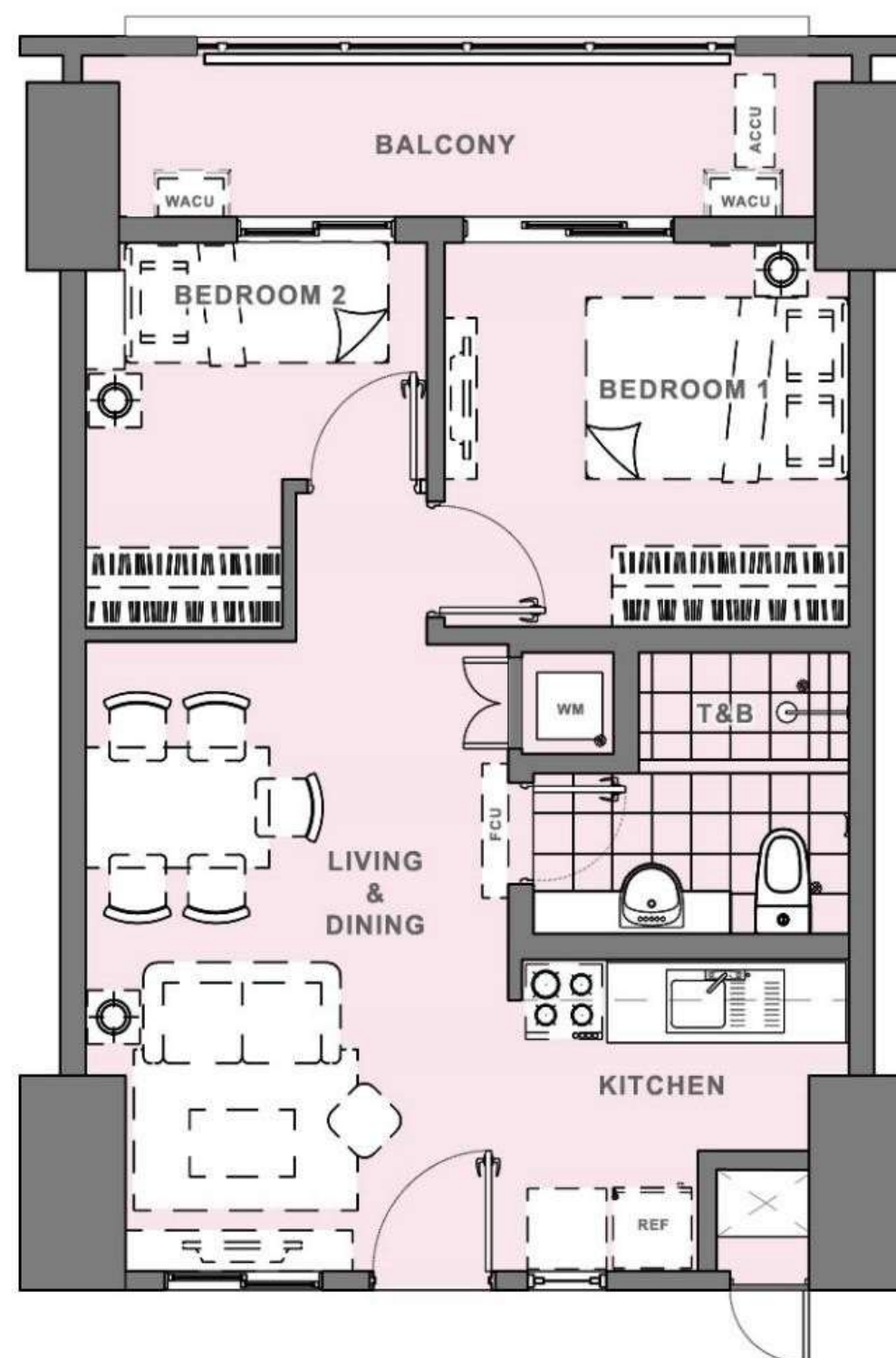
LIVING & DINING	10.00 sqm
KITCHEN	7.25
BEDROOM	11.75
TOILET & BATH	3.50
BALCONY	7.00

APPROX GROSS FLOOR AREA 39.50 sqm

- DIMENSIONS AND AREAS MAY VARY BASED ON ACTUAL SITE CONDITON.
- FURNITURE AND APPLIANCES ARE NOT INCLUDED.
- KEY PLAN IS BASED ON TYPICAL FLOOR



UNIT TYPE	2BR A
Location	Inner Unit
Floor Level	2F – PH
# of units per floor	2-7



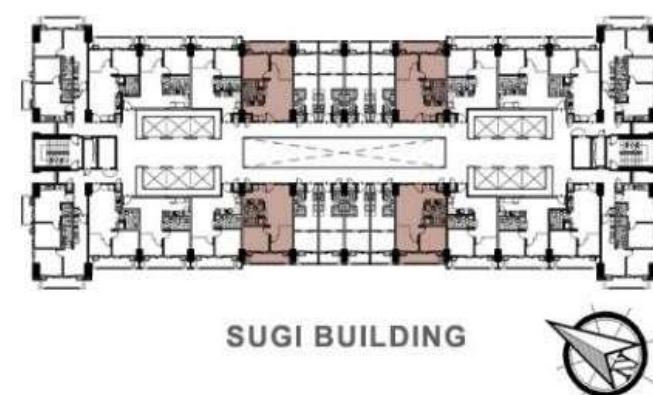
2- BEDROOM A INNER UNIT

AREA ALLOCATION

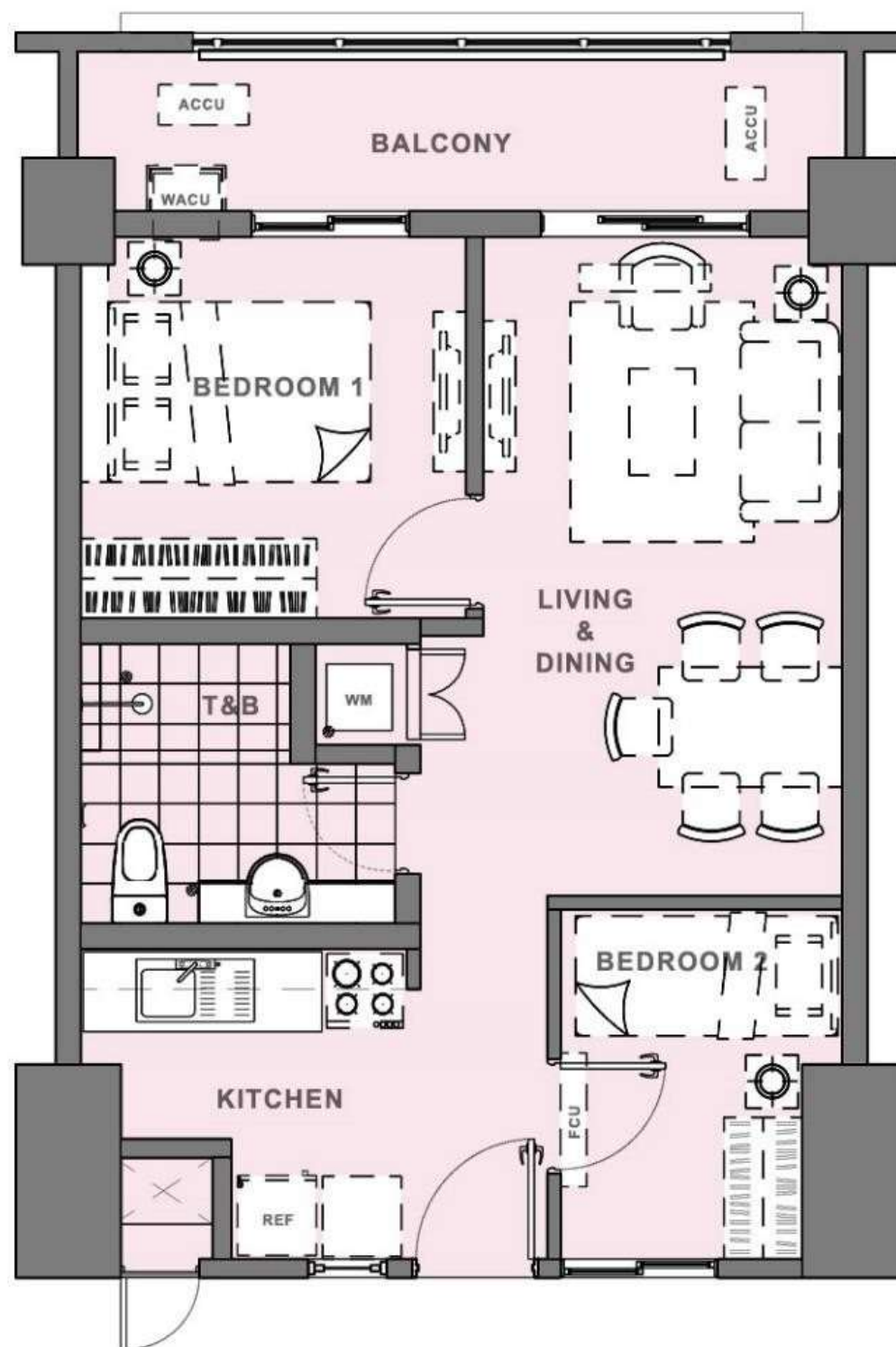
LIVING & DINING	17.90 sqm
KITCHEN	6.60
BEDROOM 1	10.15
BEDROOM 2	7.35
TOILET & BATH	6.00
BALCONY	8.00

APPROX GROSS FLOOR AREA 56.00 sqm

- DIMENSIONS AND AREAS MAY VARY BASED ON ACTUAL SITE CONDITON.
- FURNITURE AND APPLIANCES ARE NOT INCLUDED.
- KEY PLAN IS BASED ON TYPICAL FLOOR



UNIT TYPE	2BR B
Location	Inner Unit
Floor Level	7F – PH
# of units per floor	1



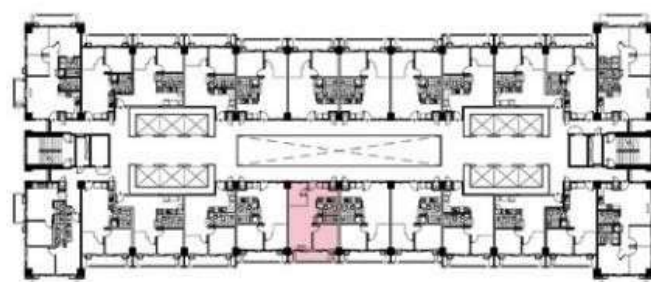
2- BEDROOM B INNER UNIT

AREA ALLOCATION

LIVING & DINING	19.25 sqm
KITCHEN	6.60
BEDROOM 1	9.75
BEDROOM 2	6.40
TOILET & BATH	6.00
BALCONY	8.00

APPROX GROSS FLOOR AREA 56.00 sqm

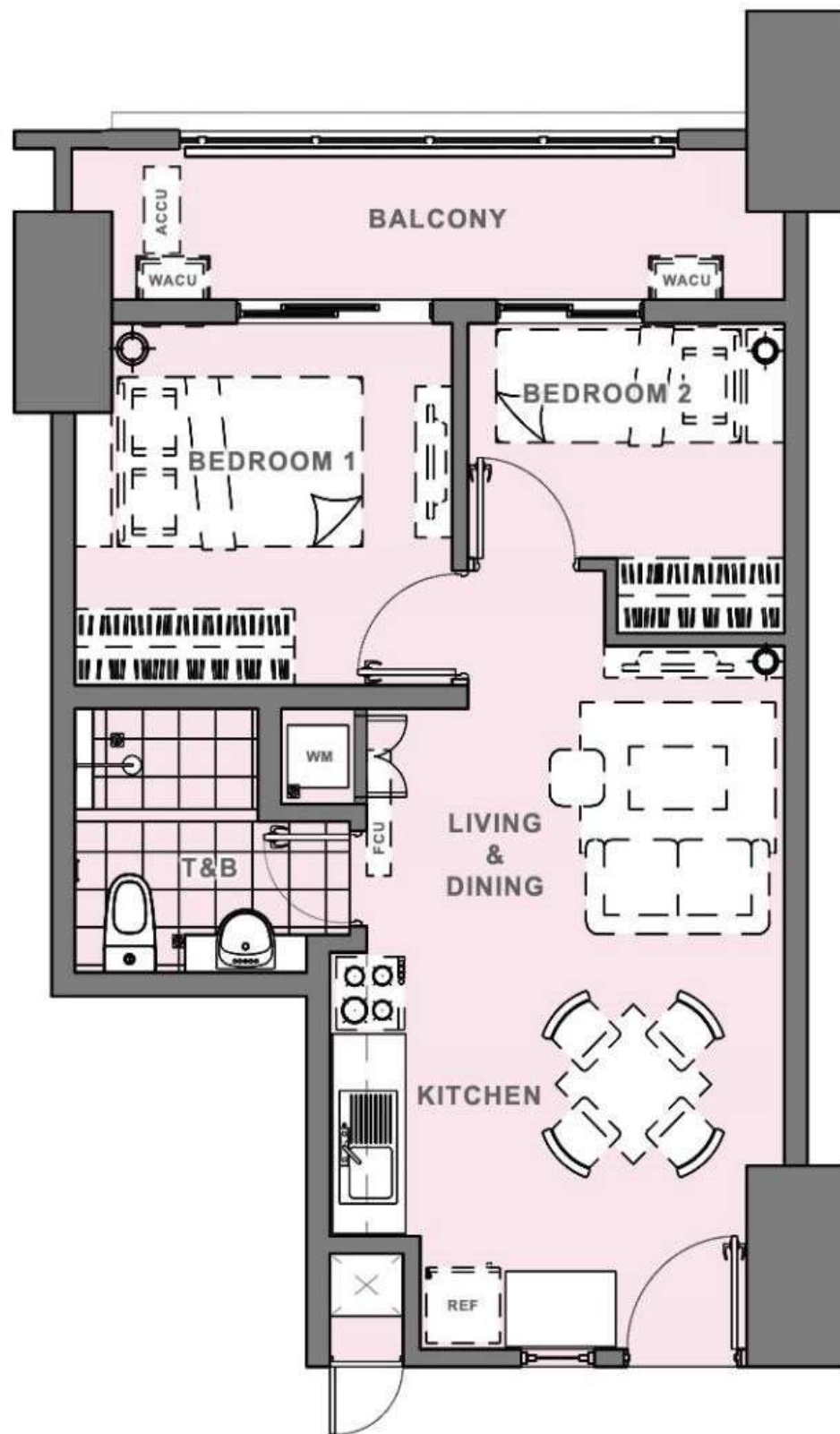
- DIMENSIONS AND AREAS MAY VARY BASED ON ACTUAL SITE CONDITON.
- FURNITURE AND APPLIANCES ARE NOT INCLUDED.
- KEY PLAN IS BASED ON TYPICAL FLOOR



SUGI BUILDING



UNIT TYPE	2BR C
Location	Inner Unit
Floor Level	2F – PH
# of units per floor	4



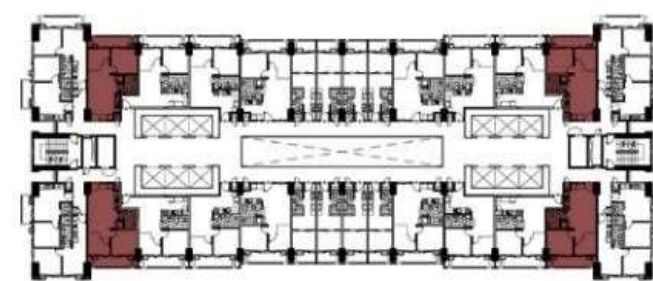
2- BEDROOM C INNER UNIT

AREA ALLOCATION

LIVING & DINING	14.10 sqm
KITCHEN	7.95
BEDROOM 1	10.30
BEDROOM 2	6.75
TOILET & BATH	5.40
BALCONY	8.00

APPROX GROSS FLOOR AREA 52.50 sqm

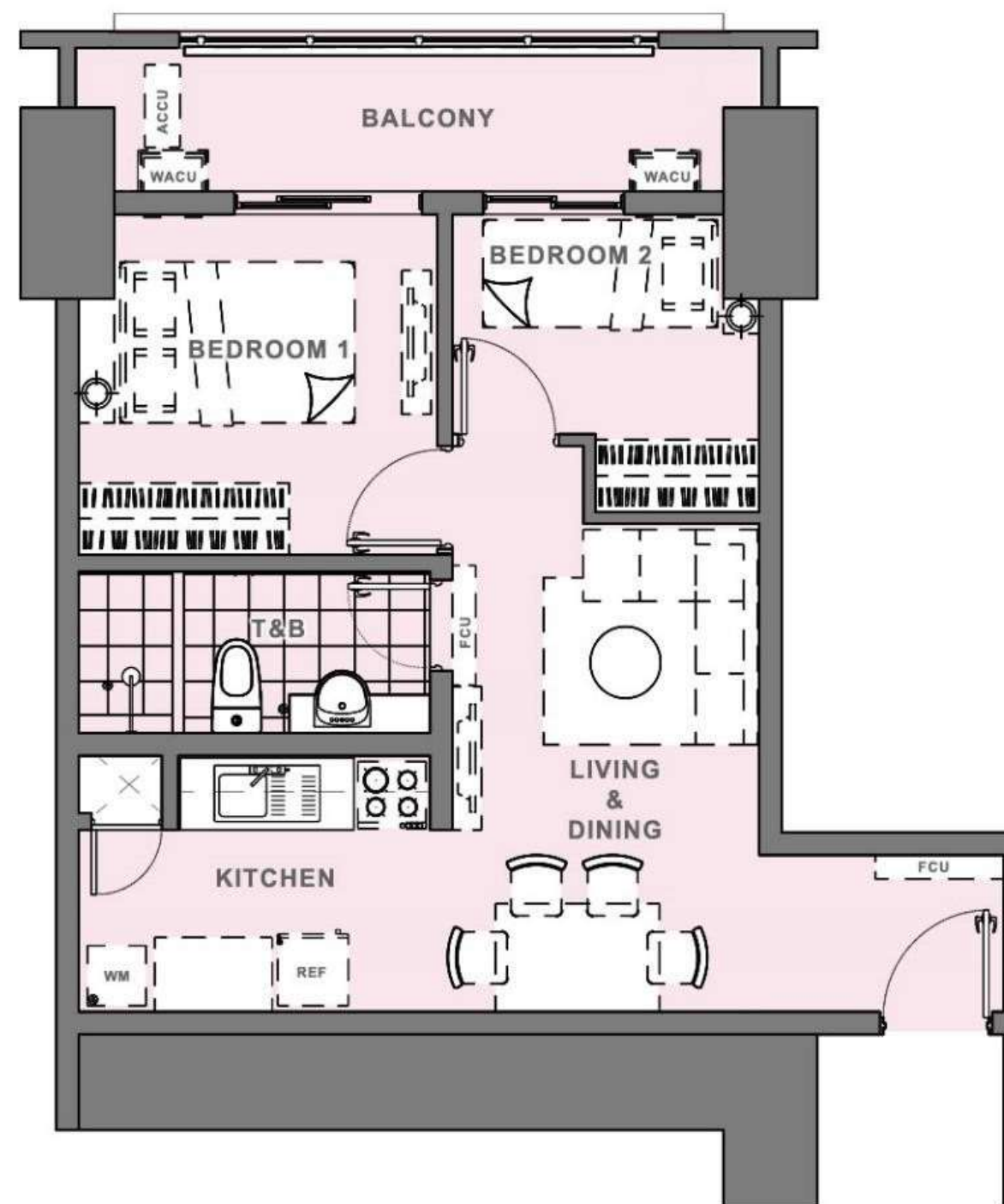
- DIMENSIONS AND AREAS MAY VARY BASED ON ACTUAL SITE CONDITON.
- FURNITURE AND APPLIANCES ARE NOT INCLUDED.
- KEY PLAN IS BASED ON TYPICAL FLOOR



SUGI BUILDING



UNIT TYPE	2BR D
Location	Inner Unit
Floor Level	2F – PH
# of units per floor	4



2- BEDROOM D INNER UNIT

AREA ALLOCATION

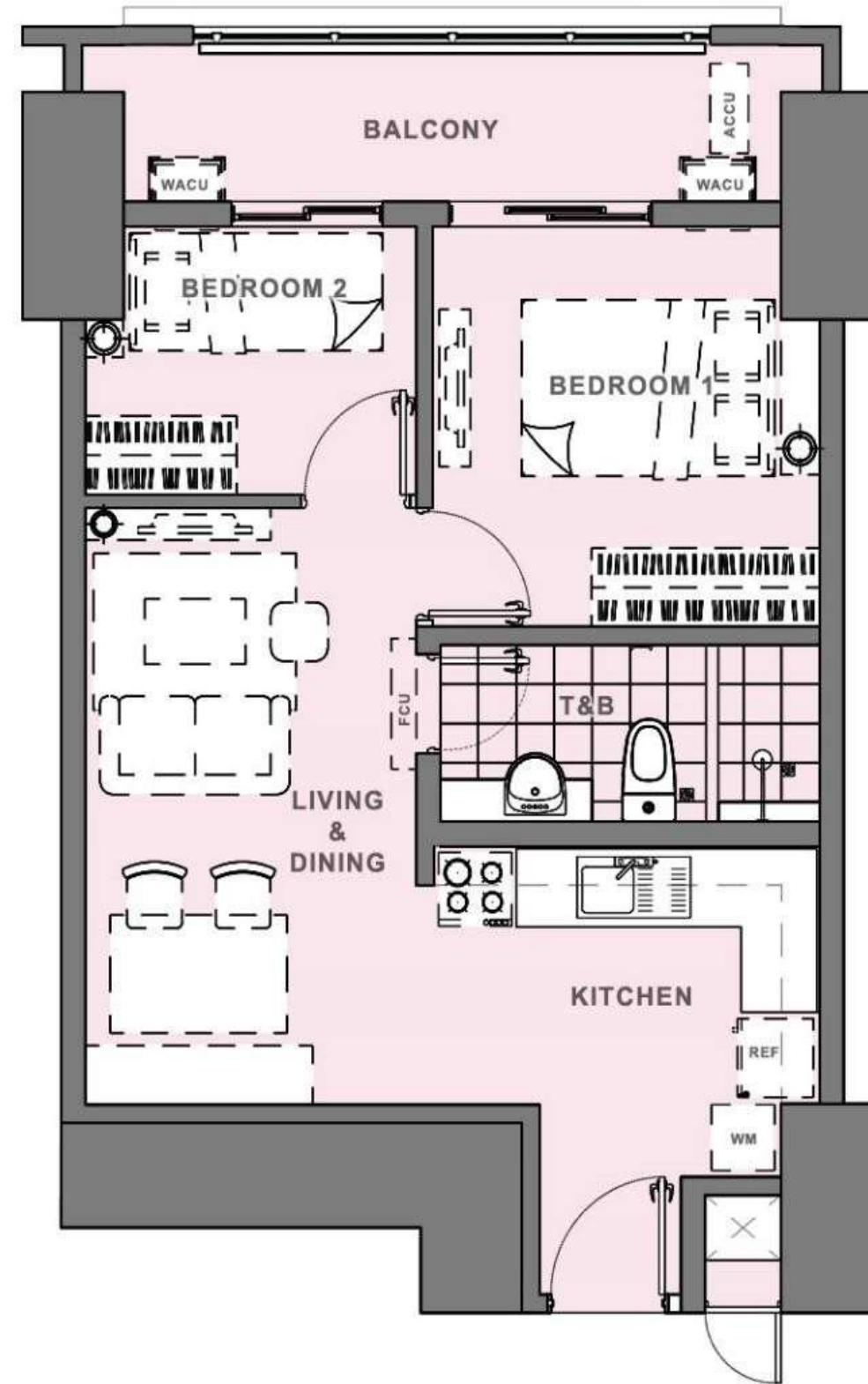
LIVING & DINING	16.15 sqm
KITCHEN	7.74
BEDROOM 1	10.03
BEDROOM 2	6.78
TOILET & BATH	4.80
BALCONY	8.00

APPROX GROSS FLOOR AREA 53.50 sqm

- DIMENSIONS AND AREAS MAY VARY BASED ON ACTUAL SITE CONDITON.
- FURNITURE AND APPLIANCES ARE NOT INCLUDED.
- KEY PLAN IS BASED ON TYPICAL FLOOR



UNIT TYPE	2BR E
Location	Inner Unit
Floor Level	2F – PH
# of units per floor	4



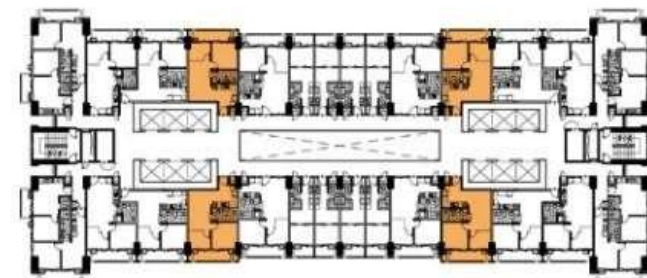
2- BEDROOM E INNER UNIT

AREA ALLOCATION

LIVING & DINING	13.30 sqm
KITCHEN	10.50
BEDROOM 1	10.60
BEDROOM 2	6.30
TOILET & BATH	4.80
BALCONY	8.00

APPROX GROSS FLOOR AREA 53.50 sqm

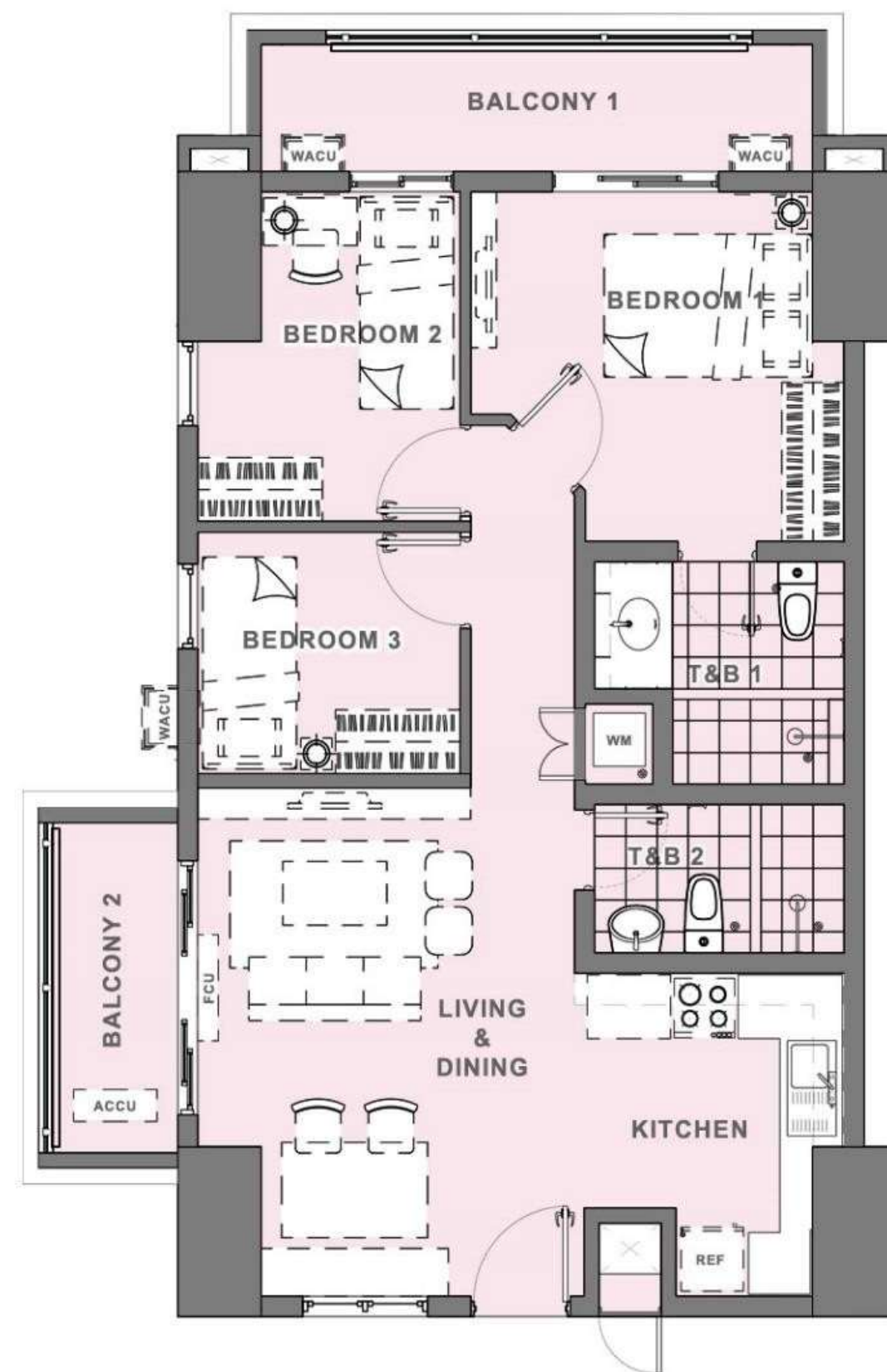
- DIMENSIONS AND AREAS MAY VARY BASED ON ACTUAL SITE CONDITON.
- FURNITURE AND APPLIANCES ARE NOT INCLUDED.
- KEY PLAN IS BASED ON TYPICAL FLOOR



SUGI BUILDING



UNIT TYPE	3BR
Location	End Unit
Floor Level	33F – PH
# of units per floor	4



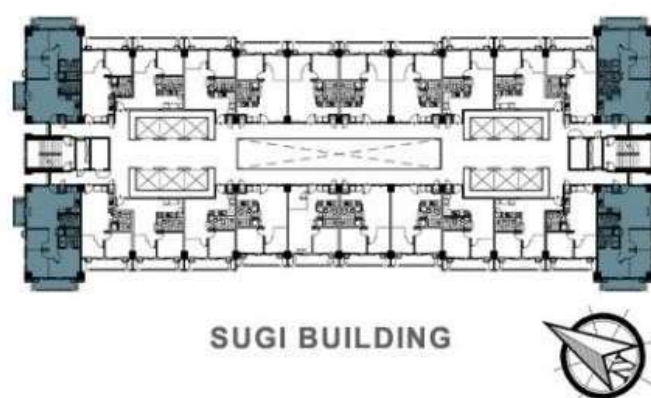
3- BEDROOM END UNIT

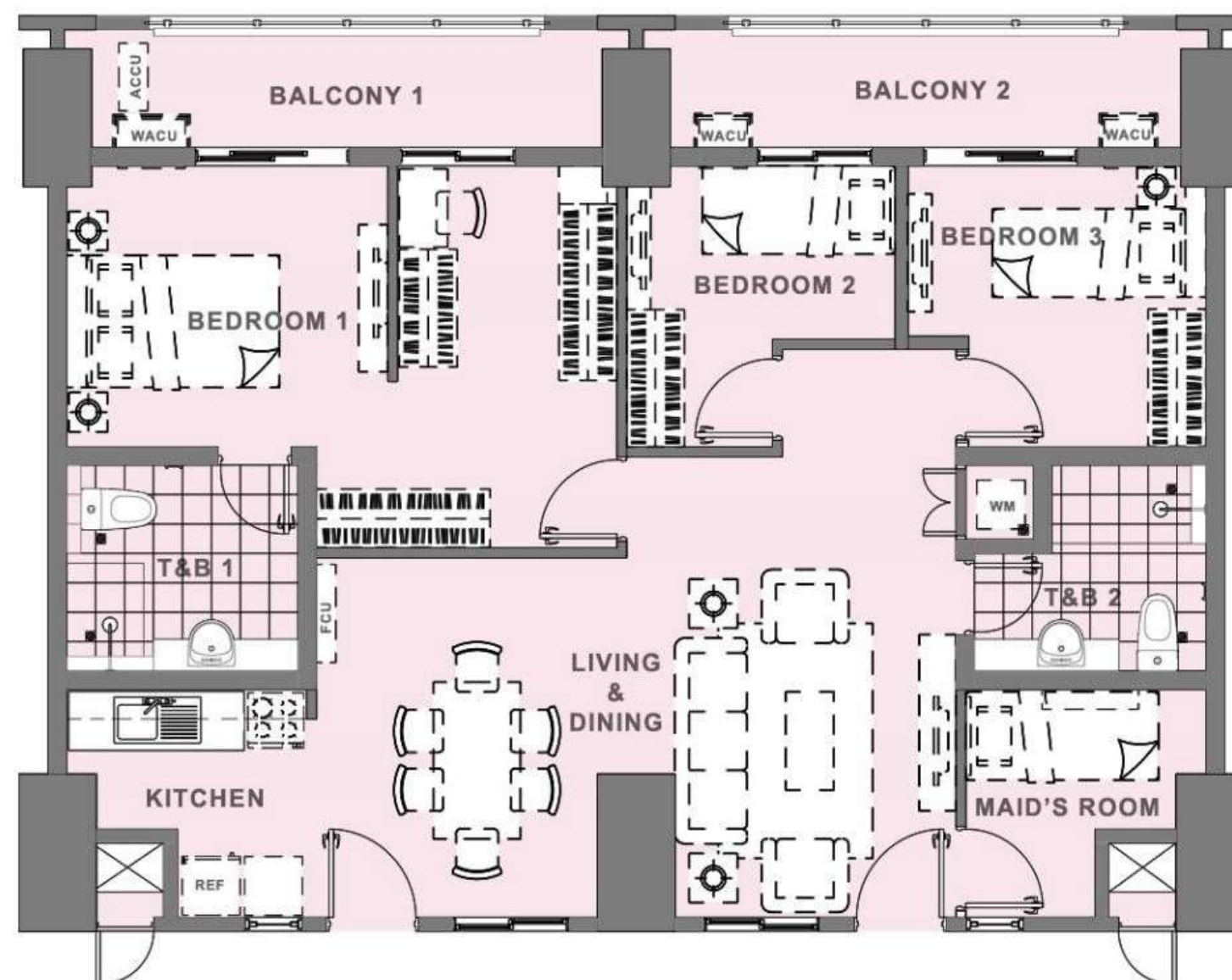
AREA ALLOCATION

LIVING & DINING	23.70 sqm
KITCHEN	8.65
BEDROOM 1	12.00
BEDROOM 2	9.30
BEDROOM 3	6.35
TOILET & BATH 1	6.00
TOILET & BATH 2	4.00
BALCONY 1	7.00
BALCONY 2	4.50

APPROX GROSS FLOOR AREA 81.50 sqm

-DIMENSIONS AND AREAS MAY VARY BASED ON ACTUAL SITE CONDITON.
-FURNITURE AND APPLIANCES ARE NOT INCLUDED.
-KEY PLAN IS BASED ON TYPICAL FLOOR



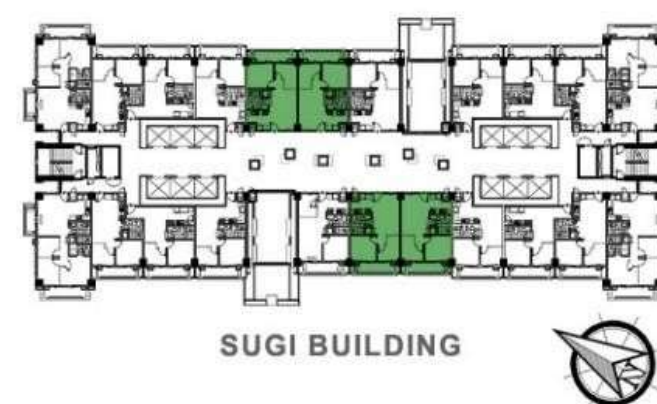


TANDEM UNIT
AREA ALLOCATION

LIVING & DINING	31.60 sqm
KITCHEN	6.60
BEDROOM 1	22.00
BEDROOM 2	7.60
BEDROOM 3	9.50
MAID'S ROOM	6.70
TOILET & BATH 1	6.00
TOILET & BATH 2	6.00
BALCONY 1	8.00
BALCONY 2	8.00

APPROX GROSS FLOOR AREA 112.00 sqm

-DIMENSIONS AND AREAS MAY VARY BASED ON ACTUAL SITE CONDITON.
-FURNITURE AND APPLIANCES ARE NOT INCLUDED.
-KEY PLAN IS BASED ON TYPICAL FLOOR



TURNOVER FINISHES

Residential Units	1 Bedroom Unit			2 Bedroom Unit			3 Bedroom Unit
	24.00 sqm	31.50 sqm	31.50 sqm	44.50 sqm	45.50 sqm	48.00 sqm	70.00 sqm
FLOOR FINISHES							
Living, Dining and Kitchen	Vinyl planks with baseboard			Ceramic tiles with baseboard			
Bedrooms	Vinyl planks with baseboard						
Balcony	Ceramic tiles with pebble washout (except for units at ground floor)						
Toilet and Bath	Unglazed ceramic tiles						
WALL FINISHES							
Interior Walls	Painted finish						
Toilet	Ceramic tiles; Painted cement finish above wall tiles						
CEILING FINISHES							
Living, Dining and Kitchen	Painted plain cement finish						
Bedrooms	Painted plain cement finish						
Toilet and Bath	Painted ficemboard ceiling						
SPECIALTIES							
Kitchen Area	Granite finish kitchen countertop with cabinet system						
Toilet and Bath	Mirror Cabinet			Granite finish lavatory countertop for T&B 1			
DOORS							
Entrance Door	Wooden door on metal jamb						
Bedroom Door	Aluminum sliding framed glass panel	Wooden door on metal jamb					
Toilet Door	Wooden door with half louver on metal jamb						
Balcony Door	Aluminum sliding framed glass panel with insect screen						

TURNOVER FINISHES

Residential Units	1 Bedroom Unit			2 Bedroom Unit			3 Bedroom Unit
	24.00 sqm	31.50 sqm	32.50 sqm	44.50 sqm	45.50 sqm	48.00 sqm	70.00 sqm
WINDOWS	Aluminum framed glass panel with insect screen (except awning windows)						
FINISHING HARDWARE							
Main Door Lockset	Mortise type keyed lockset						
Bedroom Lockset	Flush type keyed lockset	Lever type keyed lockset					
Toilet Lockset	Lever type privacy lockset						
TOILET AND KITCHEN FIXTURES							
Water Closet	Top flush, one-piece type						
Lavatory	Wall-hung with semi-pedestal type	Semi-counter top basin				Undercounter type and wall hung with semi-pedestal type	
Shower Head and Fittings	Exposed shower and mixer type						
Toilet Paper Holder	Recessed type						
Soap Holder	Niche at wall						
Kitchen Sink	Stainless steel, single bowl			Stainless steel, single bowl with one-side drainboard			
Kitchen Faucet	Gooseneck type			Rotary lever type			
Toilet Exhaust	Ceiling-mounted exhaust fan						
Kitchen Exhaust	Rangehood provision						
AIR CONDITION	Provision for Window type Air Conditioning Unit			Provision for Window type and Split type Air Conditioning Unit			

DMCI HOMES

KAI GARDEN
RESIDENCES

SELLING PROGRAM &
IMPLEMENTING GUIDELINES



July 27, 2017

Release of Pricelist,
Availability Plans,
Unit Layouts and
Turnover Specifications



August 15, 2017

Effectivity of
Pricelist



January 2023

Target
Completion Date

MINIMUM DOWNPAYMENT

30%

Condominium Units

Parking Slots

*Thank You
and
Happy Selling!*

DMCI HOMES



KAI GARDEN

RESIDENCES

DISCLAIMER

In its continuing desire to improve the project, DMCI Homes reserves the right to change product features without prior notice and approval. Floor plans and perspectives depicted in this material are for demonstration purposes only and should not be relied upon as final project plans.

DMCI HOMES



KAI GARDEN
RESIDENCES



Kai Garden Residences bears the DMCI Homes Quality Seal, which represents our commitment to deliver homes that are built to last. Your new home is subject to our proprietary quality management system, and comes with a 2-year limited warranty*

**Property developers typically provide a one-year warranty. DMCI Homes' 2-year limited warranty covers most unit deliverables, except operable items subject to daily wear and tear. Terms and conditions apply.*