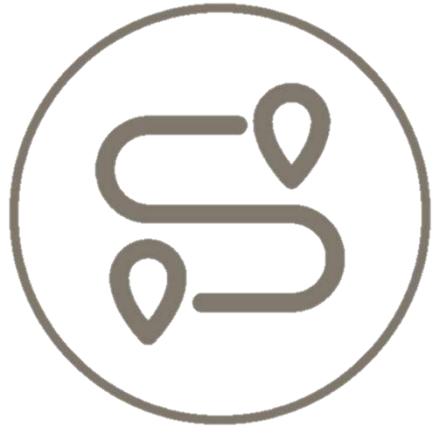






“Crestmont” means impressive peak



The Location

Navotas

Valenzuela

Malabon

Quezon City

Marikina

Antipolo

Manila

Mandaluyong

Pasig

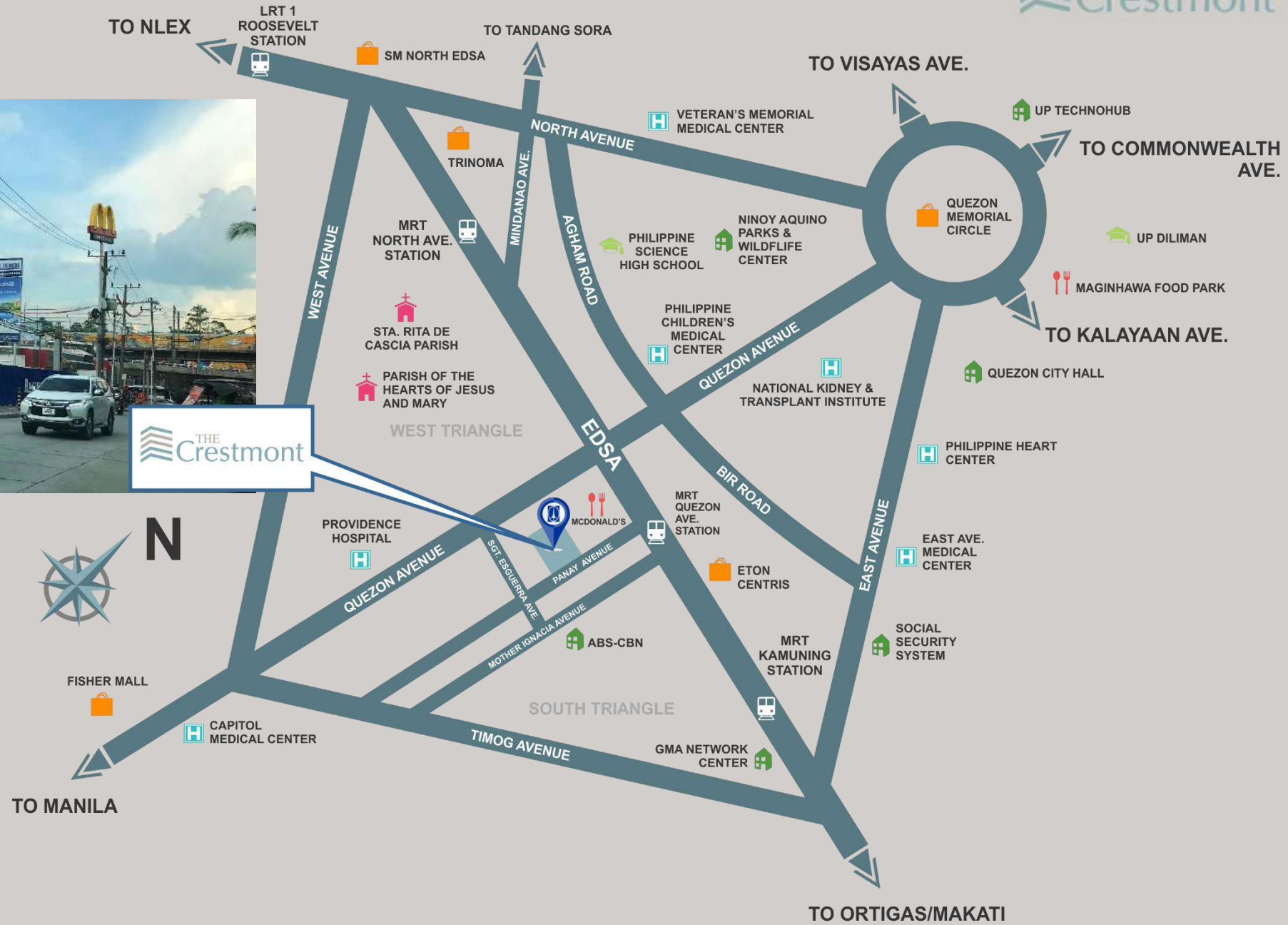


The Crestmont

SOUTH TRIANGLE







Satellite





Height: Approx. 100 meters from the ground



	Landmark	Distance (km)	ETA (mins)
	SM Savemore	650 m	3
	Centris Walk	2.6	9
	Vertis North	2.8	10
	TriNoMa	3.1	15
	MLQU Diliman	1.5	4
	Philippine Science High School	2.4	9
	UP Diliman	5.1	13
	Philippine Children's Medical Center	1.9	8
	Capitol Medical Center	2.4	8
	East Ave. Medical Center	3.5	8
	MRT-Q. Ave. Station	110 m	2
	EDSA	83 m	1
	NLEX	6.4	28

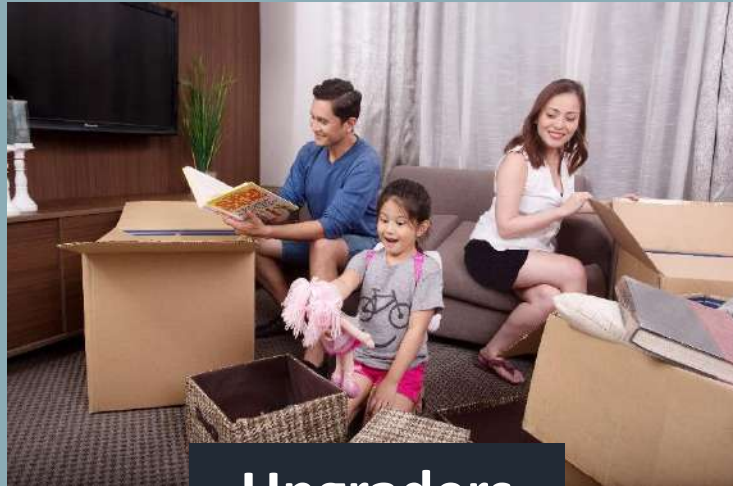
The background features abstract geometric shapes. A large teal shape, resembling a downward-pointing arrow or a large 'V', is positioned in the upper right. Below it, a smaller, lighter teal shape is also oriented downwards. In the bottom right corner, there is a brown shape that appears to be a corner or a partial triangle.

The Target Market and Key Takeaways

The Target Market



End-users



Upgraders



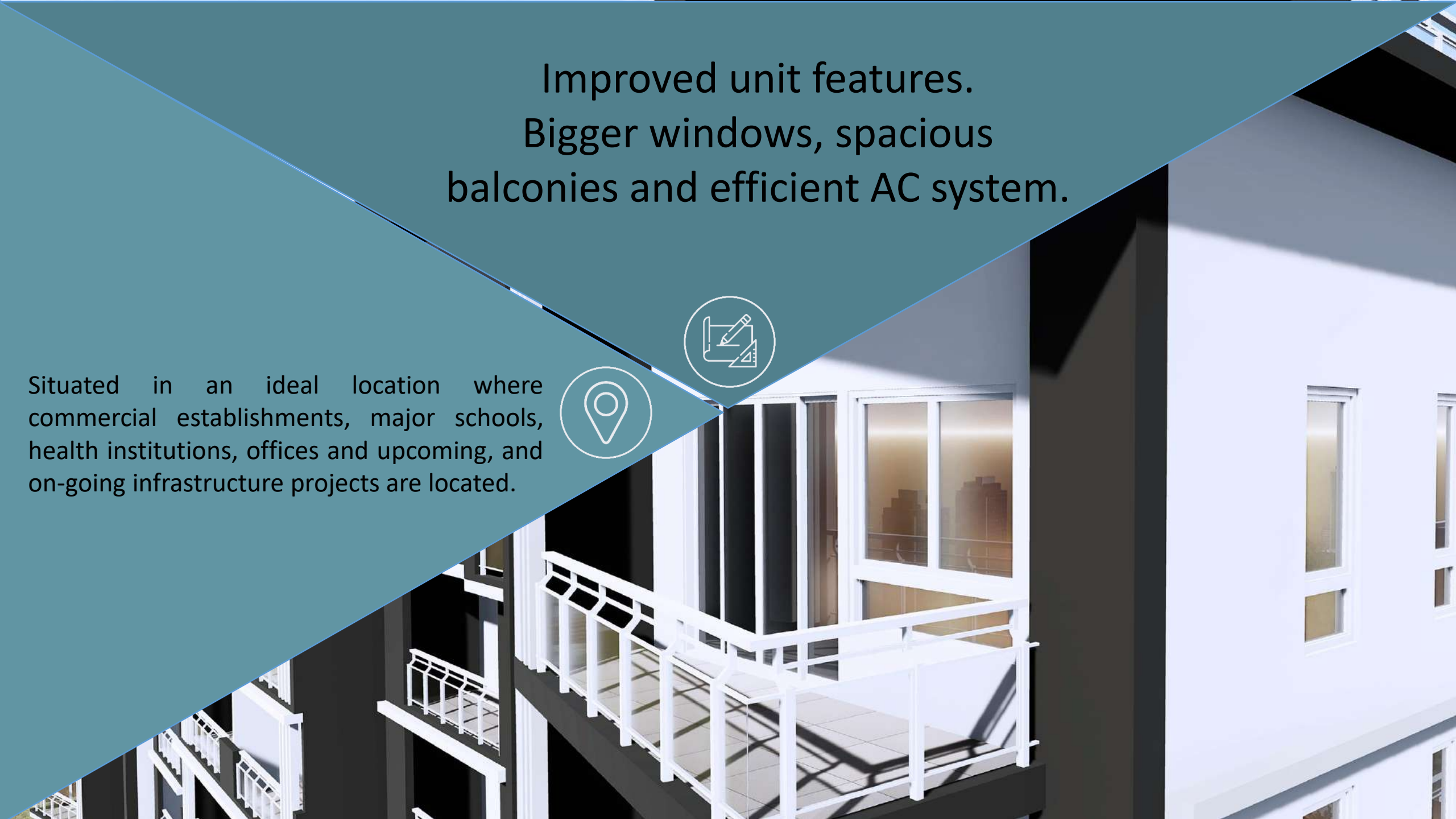
Investors

Situated in an ideal location where commercial establishments, major schools, health institutions, offices and upcoming, and on-going infrastructure projects are located.



Improved unit features.
Bigger windows, spacious
balconies and efficient AC system.

Situated in an ideal location where
commercial establishments, major schools,
health institutions, offices and upcoming,
and on-going infrastructure projects are located.



Improved unit features.
Bigger windows, spacious
balconies and efficient AC system.

Situated in an ideal location where
commercial establishments, major schools,
health institutions, offices and upcoming, and
on-going infrastructure projects are located.



Resort-inspired amenities



Improved unit features.
Bigger windows, spacious
balconies and efficient AC system.

Situated in an ideal location where
commercial establishments, major schools,
health institutions, offices and upcoming, and
on-going infrastructure projects are located.



Resort-inspired amenities

Value-for-money

C

R

E

PROJECT	ROUTE	TARGET COMPLETION DATE
MRT 7	North Ave. ↔ San Jose del Monte (Quezon City ↔ Bulacan)	2020
Mega Manila Subway	Quirino Highway ↔ FTI (Valenzuela ↔ Taguig)	2025
NLEX Harbor Link (Segment 10)	NLEX Karuhatan ↔ C3 Road (Valenzuela ↔ Caloocan)	Feb 2019
NLEX Harbor Link (Phase 2)	C3 Road ↔ Radial Road 10 (Caloocan ↔ Navotas)	End of 2019
Skyway Stage 3	NLEX Balintawak ↔ Buendia (Quezon City ↔ Makati)	2020
NLEX-SLEX Connector	C3 Road ↔ Sta. Mesa (Caloocan ↔ Skyway Stage 3)	2021

C

entral

Location



R

E

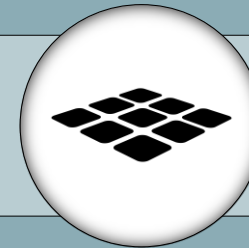


BUILDING FAÇADE : Modern Contemporary



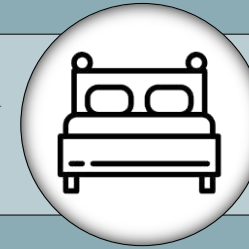
PROJECT DETAILS

3,000 sqm



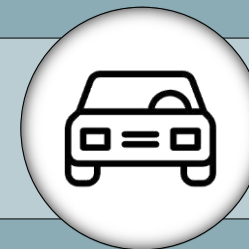
50-Storey
HRB

49 Residential
Floors



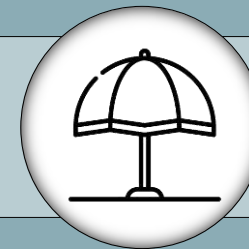
824 Units

7 Basement
Levels



371 Parking
Slots

Ground Floor



Roof Deck

OUTDOOR FEATURES

A

Drop-off Area

B

Kiddie Pool

CPlay Area /
Landscaped Area



DROP-OFF AREA



KIDDIE POOL



KIDDIE POOL



PLAY AREA / LANDSCAPED AREA

AMENITIES / FACILITIES

Reception Lobby

Lounge Area

Elevator Lobby

Entertainment Room

Fitness Gym

Function Room

Convenience Store
Laundry Station
Water Station
Mail Box Area





RECEPTION LOBBY



LOUNGE AREA



ELEVATOR LOBBY



ENTERTAINMENT ROOM





FUNCTION ROOM





SKY PROMENADE



SKY DECK POOL



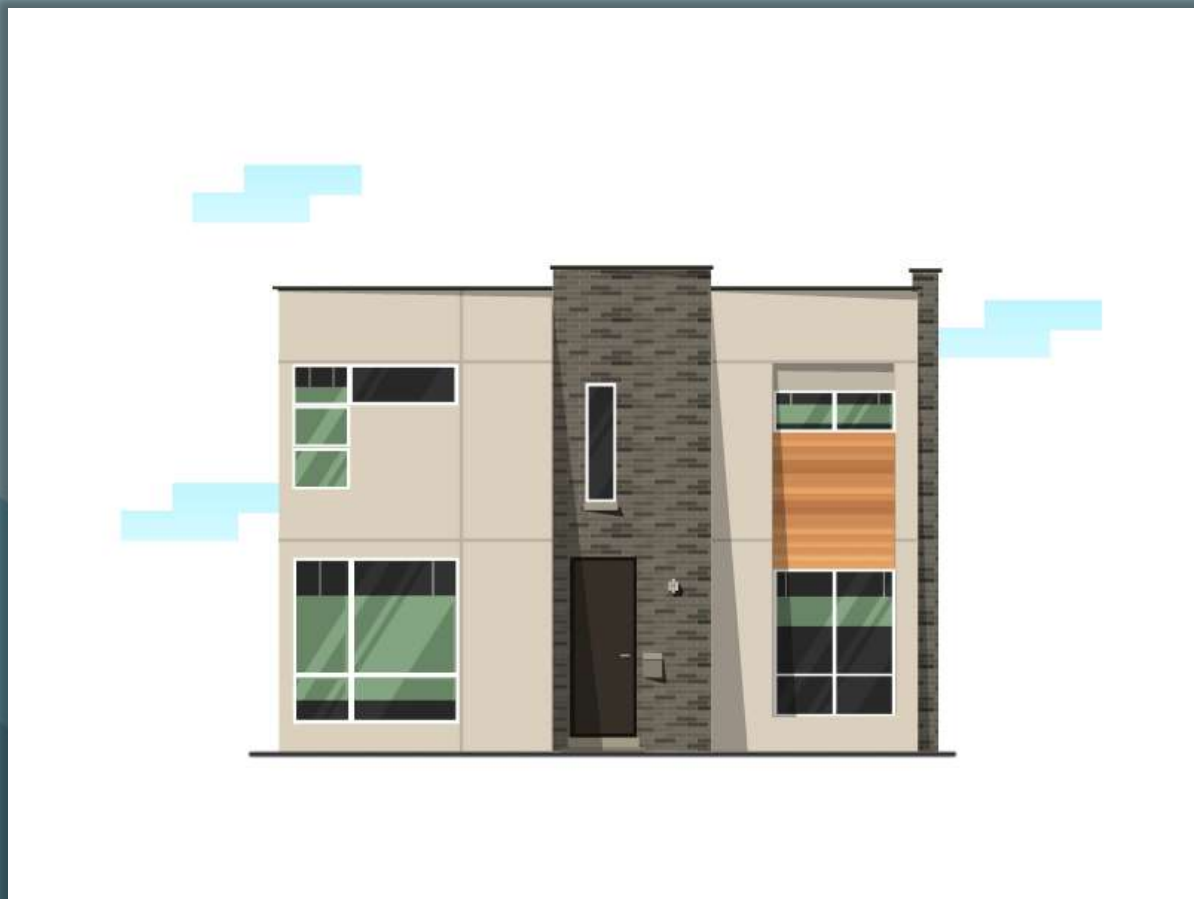
SKY DECK POOL



SKY DECK POOL

R

reinventing Design



C
entral
Location

E



49 Residential Floors

50-Storey HRB

Amenity Floor

28TH - PH Floor

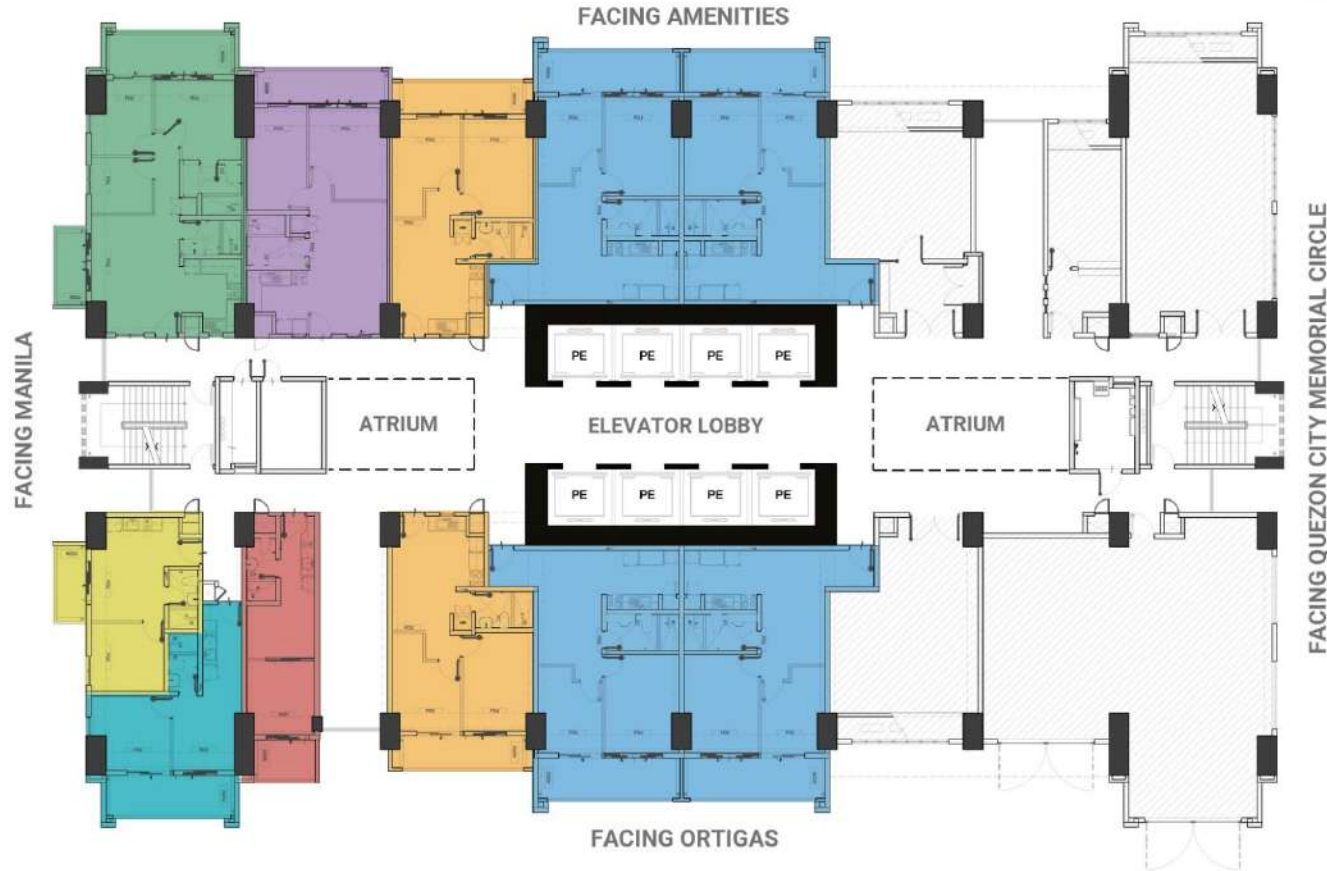
3-Bedroom
End Units

2ND - 27TH Floor

1 & 3-Bedroom
End Units

Podium Floors
2ND - 6TH Floor

Second Floor



- 1 Bedroom A (Inner Unit)**
 Approx. Gross Floor Area: 33.00 sqm
- 1 Bedroom B (End Unit)**
 Approx. Gross Floor Area: 36.00 sqm
- 1 Bedroom C (Podium)**
 Approx. Gross Floor Area: 42.50 sqm
- 2 Bedroom A (Inner Unit)**
 Approx. Gross Floor Area: 57.00 sqm
- 2 Bedroom B (Inner Unit)**
 Approx. Gross Floor Area: 66.50 sqm
- 2 Bedroom C (Inner Unit)**
 Approx. Gross Floor Area: 65.50 sqm
- 3 Bedroom A (Podium)**
 Approx. Gross Floor Area: 84.50 sqm

11

units



2nd Floor Level Plan

- Plans reflected as visuals are not to scale.
- Actual configurations and features may vary per unit.
- Please check the specifications of the particular unit you are interested on purchasing with your seller.

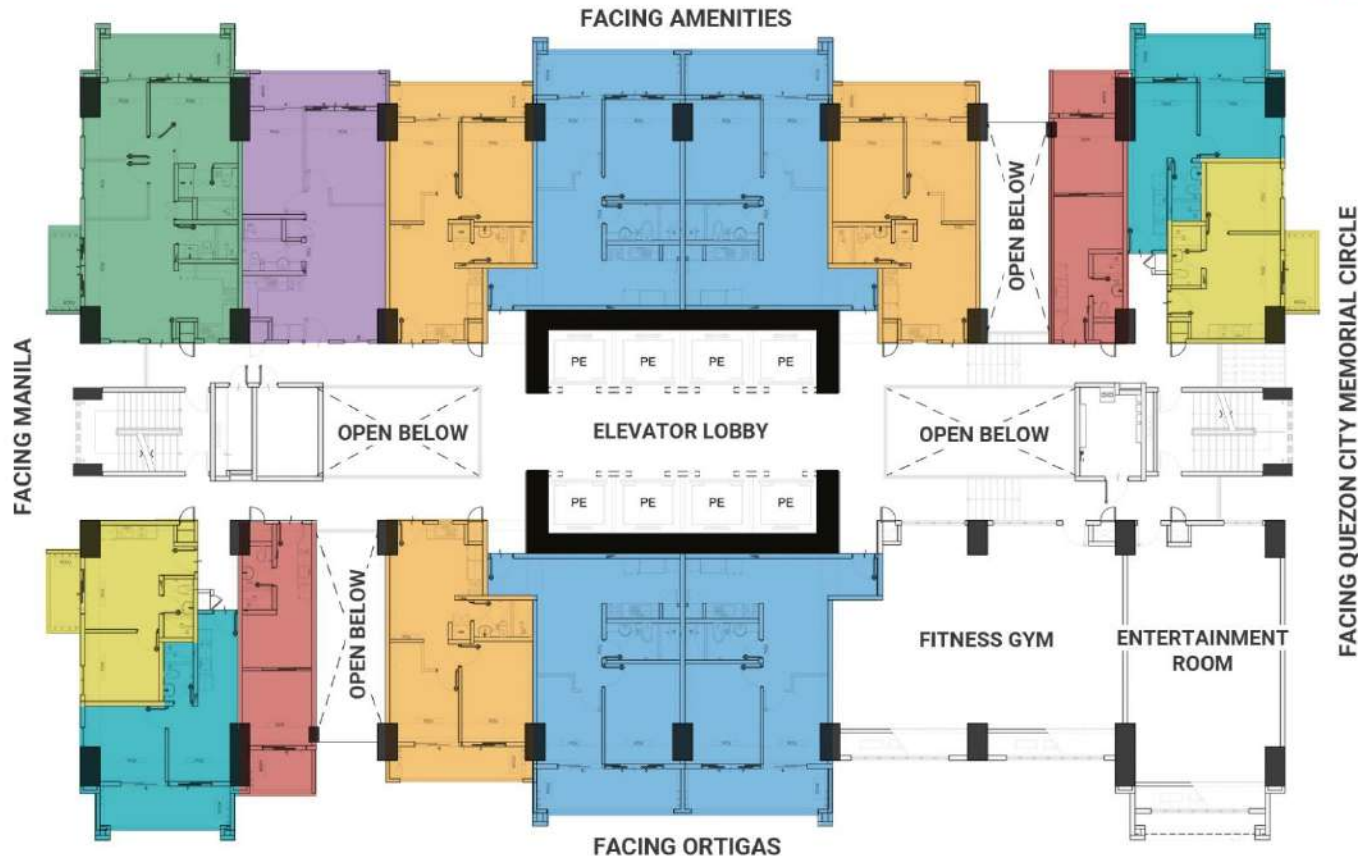
Note: Standard policy regarding request for tandem shall apply.

Third Floor

15

units

Note: Standard policy regarding request for tandem shall apply.

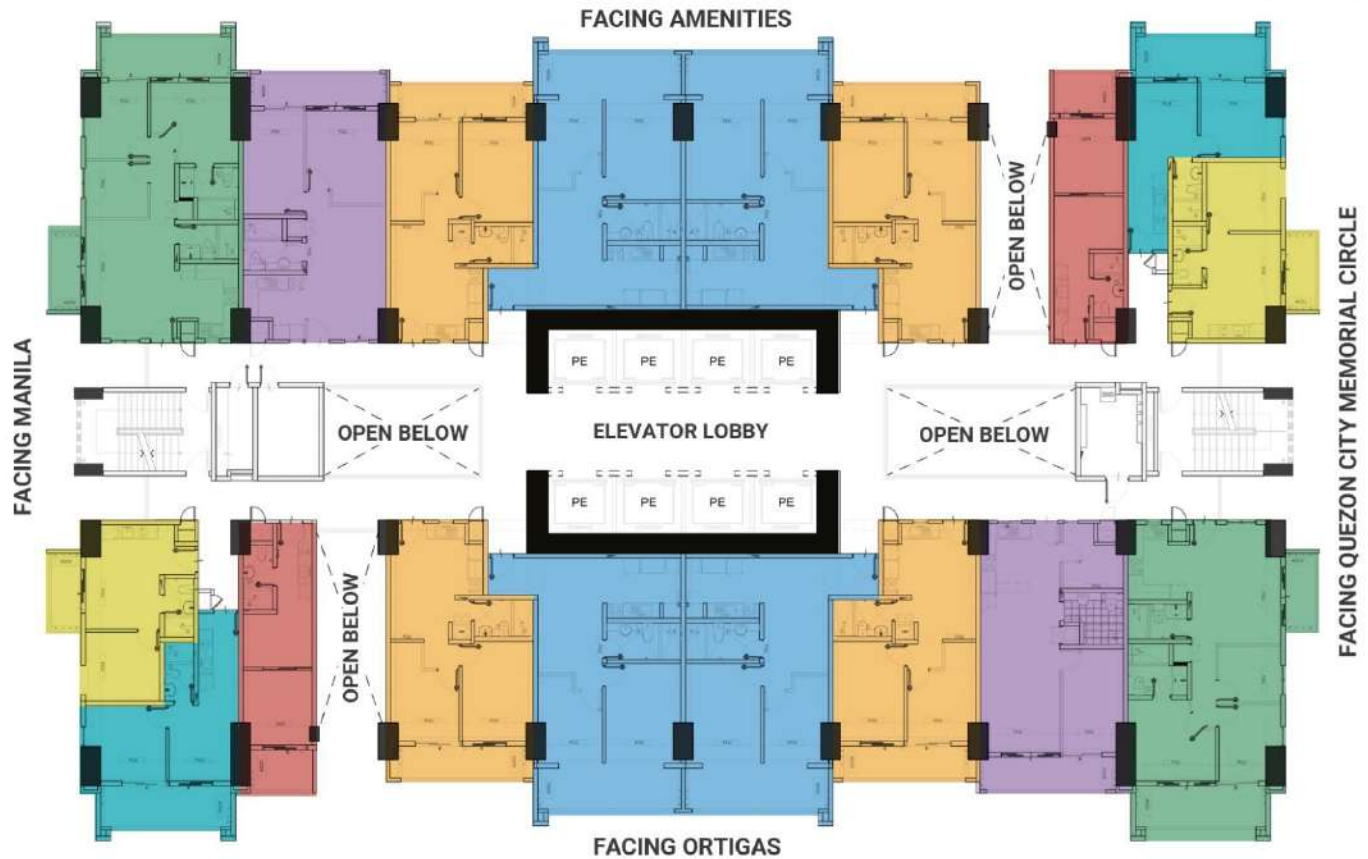


- 1 Bedroom A (Inner Unit)**
Approx. Gross Floor Area: 33.00 sqm
- 1 Bedroom B (End Unit)**
Approx. Gross Floor Area: 36.00 sqm
- 1 Bedroom C (Podium)**
Approx. Gross Floor Area: 42.50 sqm
- 2 Bedroom A (Inner Unit)**
Approx. Gross Floor Area: 57.00 sqm
- 2 Bedroom B (Inner Unit)**
Approx. Gross Floor Area: 66.50 sqm
- 2 Bedroom C (Inner Unit)**
Approx. Gross Floor Area: 65.50 sqm
- 3 Bedroom A (Podium)**
Approx. Gross Floor Area: 84.50 sqm

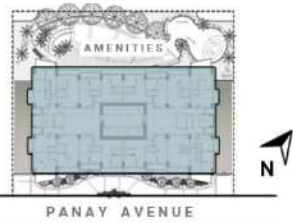
3rd Floor Level Plan

- Plans reflected as visuals are not to scale.
- Actual configurations and features may vary per unit.
- Please check the specifications of the particular unit you are interested on purchasing with your seller.





- 1 Bedroom A (Inner Unit)**
 Approx. Gross Floor Area: 33.00 sqm
- 1 Bedroom B (End Unit)**
 Approx. Gross Floor Area: 36.00 sqm
- 1 Bedroom C (Podium)**
 Approx. Gross Floor Area: 42.50 sqm
- 2 Bedroom A (Inner Unit)**
 Approx. Gross Floor Area: 57.00 sqm
- 2 Bedroom B (Inner Unit)**
 Approx. Gross Floor Area: 66.50 sqm
- 2 Bedroom C (Inner Unit)**
 Approx. Gross Floor Area: 65.50 sqm
- 3 Bedroom A (Podium)**
 Approx. Gross Floor Area: 84.50 sqm



4th Floor Level Plan

- Plans reflected as visuals are not to scale.
- Actual configurations and features may vary per unit.
- Please check the specifications of the particular unit you are interested on purchasing with your seller.

AS OF JULY 2019

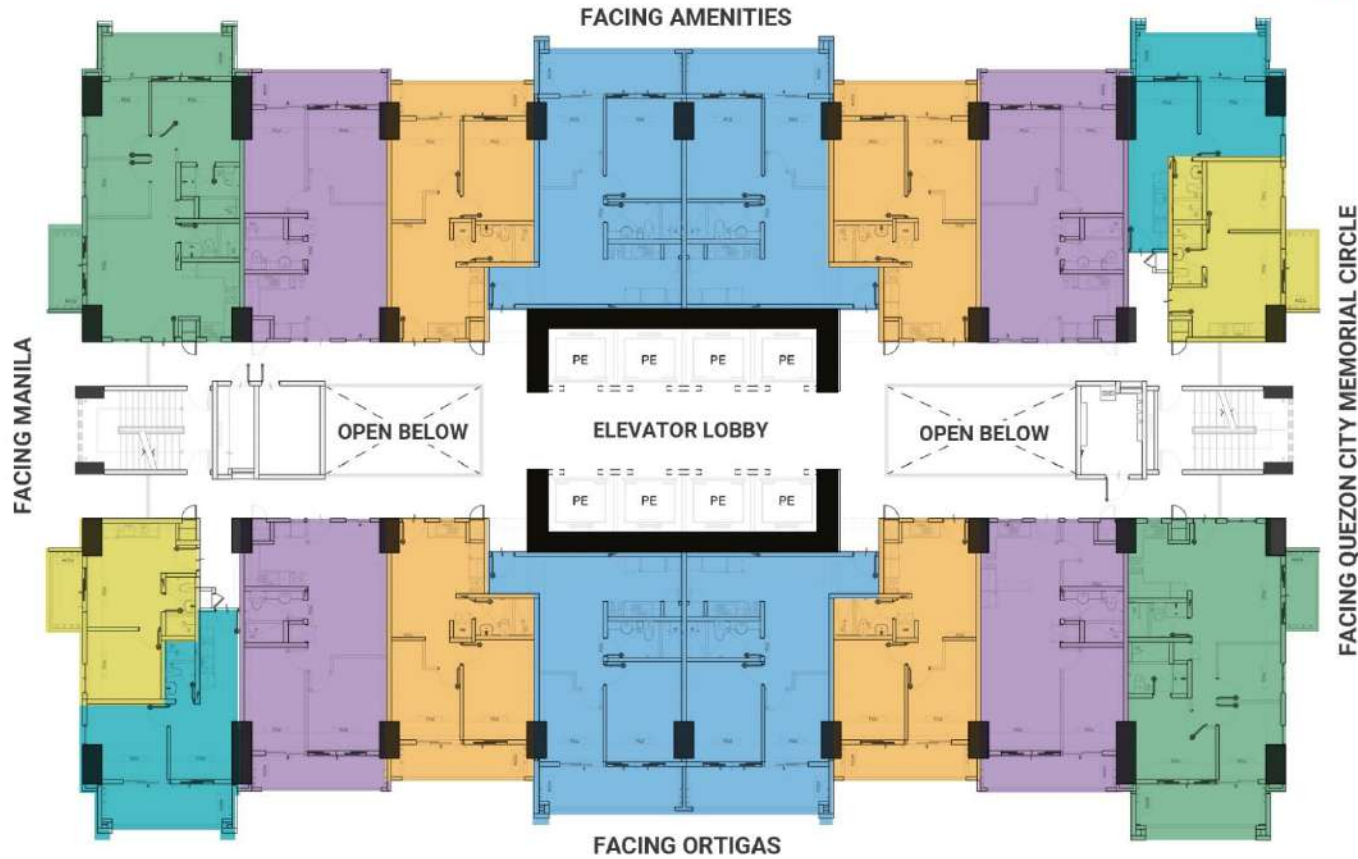
Podium Floor

Fourth Floor

18

units

Note: Standard policy regarding request for tandem shall apply.



1 Bedroom B (End Unit)
Approx. Gross Floor Area: 36.00 sqm

1 Bedroom C (Podium)
Approx. Gross Floor Area: 42.50 sqm

2 Bedroom A (Inner Unit)
Approx. Gross Floor Area: 57.00 sqm

2 Bedroom B (Inner Unit)
Approx. Gross Floor Area: 66.50 sqm

2 Bedroom C (Inner Unit)
Approx. Gross Floor Area: 65.50 sqm

3 Bedroom A (Podium)
Approx. Gross Floor Area: 84.50 sqm

5th-6th Floor Level Plan

- Plans reflected as visuals are not to scale.
- Actual configurations and features may vary per unit.
- Please check the specifications of the particular unit you are interested on purchasing with your seller.

18

units per floor

Note: Standard policy regarding request for tandem shall apply.

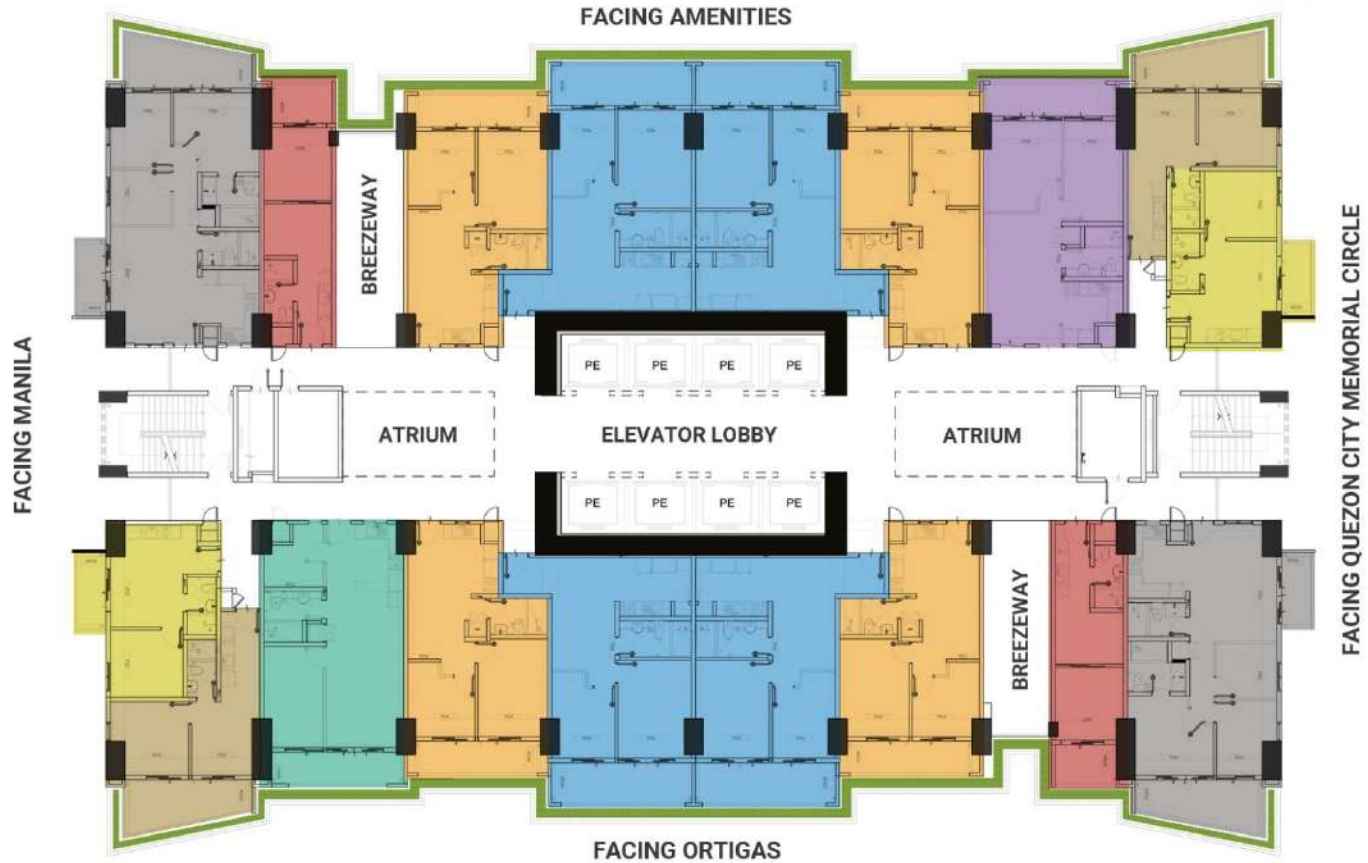


Seventh Floor

18

units

Note: Standard policy regarding request for tandem shall apply.



- | | | | |
|--|--|--|--|
| 1 Bedroom A (Inner Unit)
Approx. Gross Floor Area: 33.00 sqm | 1 Bedroom B (End Unit)
Approx. Gross Floor Area: 36.00 sqm | 1 Bedroom C (End Unit)
Approx. Gross Floor Area: 42.50 sqm | 2 Bedroom A (Inner Unit)
Approx. Gross Floor Area: 57.00 sqm |
| 2 Bedroom B (Inner Unit)
Approx. Gross Floor Area: 66.50 sqm | 2 Bedroom C (Inner Unit)
Approx. Gross Floor Area: 65.50 sqm | 2 Bedroom D (Inner Unit)
Approx. Gross Floor Area: 65.50 sqm | 3 Bedroom A (End Unit)
Approx. Gross Floor Area: 84.50 sqm |

7th Floor Level Plan

- Plans reflected as visuals are not to scale.
- Actual configurations and features may vary per unit.
- Please check the specifications of the particular unit you are interested on purchasing with your seller.

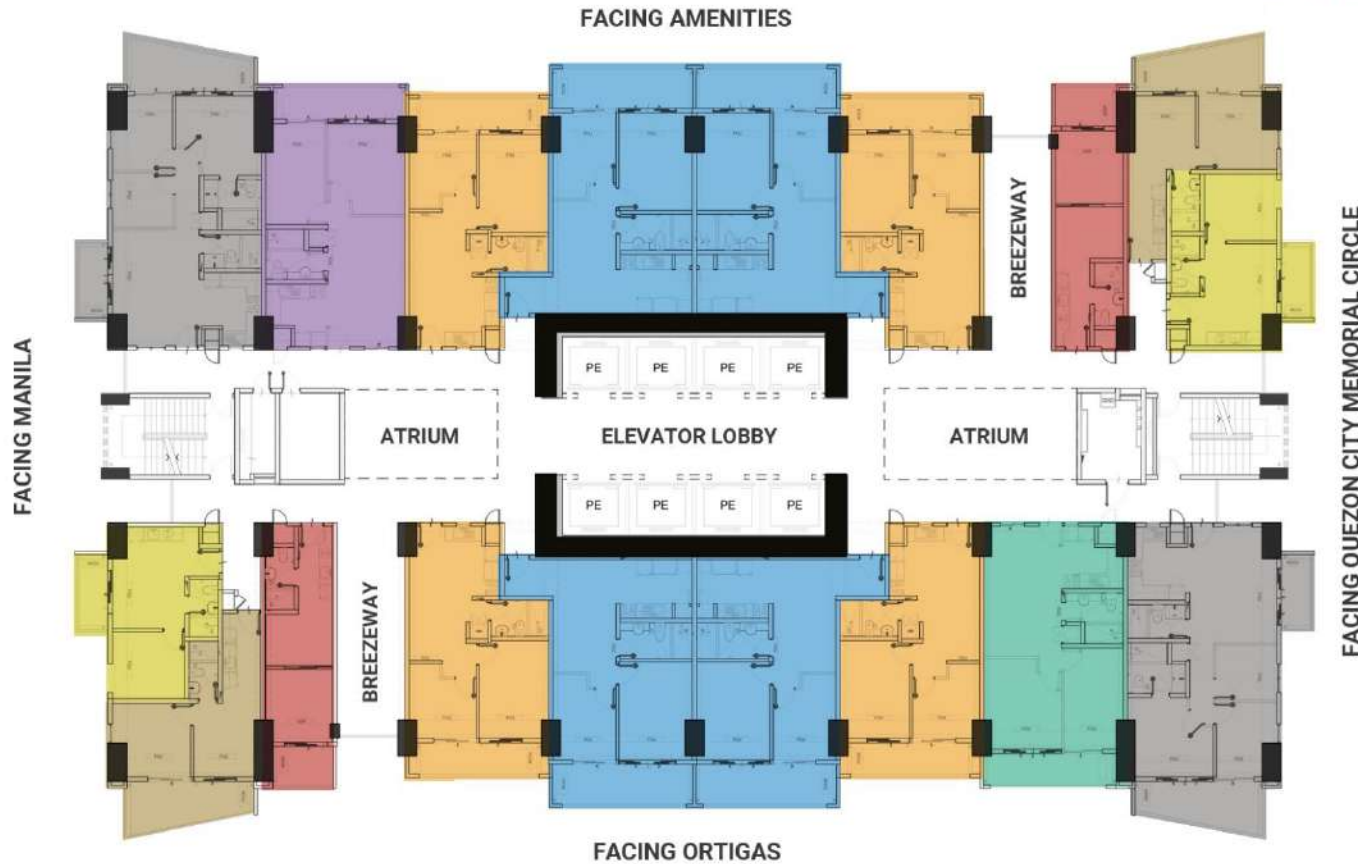


Atrium Floor

18

units per floor

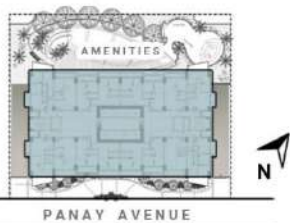
Note: Standard policy regarding request for tandem shall apply.



- | | | | |
|--|--|--|--|
| 1 Bedroom A (Inner Unit)
Approx. Gross Floor Area: 33.00 sqm | 1 Bedroom B (End Unit)
Approx. Gross Floor Area: 36.00 sqm | 1 Bedroom C (End Unit)
Approx. Gross Floor Area: 42.50 sqm | 2 Bedroom A (Inner Unit)
Approx. Gross Floor Area: 57.00 sqm |
| 2 Bedroom B (Inner Unit)
Approx. Gross Floor Area: 66.50 sqm | 2 Bedroom C (Inner Unit)
Approx. Gross Floor Area: 65.50 sqm | 2 Bedroom D (Inner Unit)
Approx. Gross Floor Area: 65.50 sqm | 3 Bedroom A (End Unit)
Approx. Gross Floor Area: 84.50 sqm |

12th & 23rd Floor Level Plan

- Plans reflected as visuals are not to scale.
- Actual configurations and features may vary per unit.
- Please check the specifications of the particular unit you are interested on purchasing with your seller.

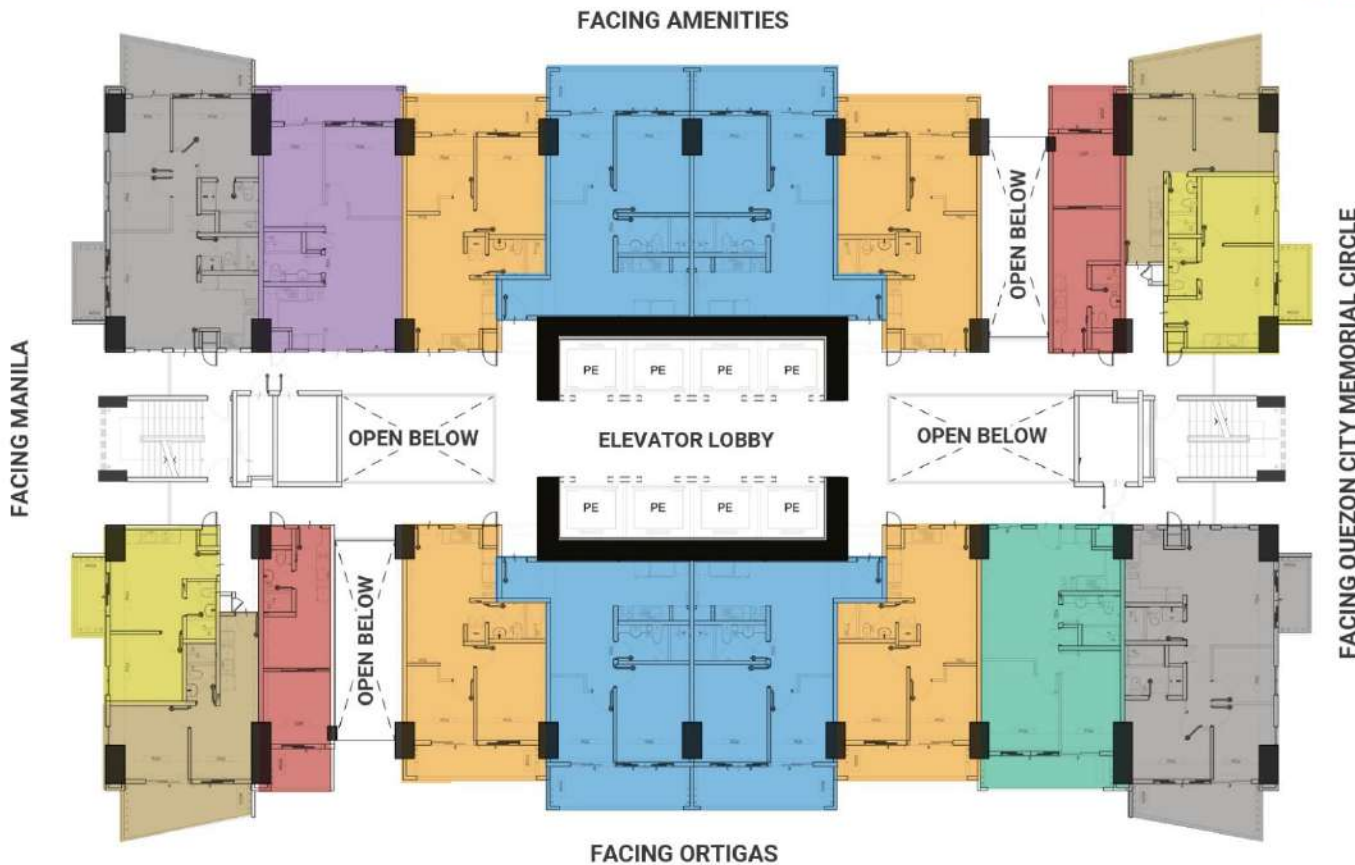


Breezeway Floor

18

units per floor

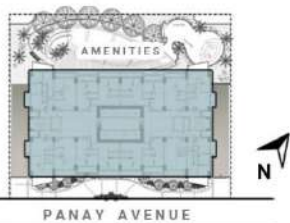
Note: Standard policy regarding request for tandem shall apply.



- | | | | |
|--|--|--|--|
| 1 Bedroom A (Inner Unit)
Approx. Gross Floor Area: 33.00 sqm | 1 Bedroom B (End Unit)
Approx. Gross Floor Area: 36.00 sqm | 1 Bedroom C (End Unit)
Approx. Gross Floor Area: 42.50 sqm | 2 Bedroom A (Inner Unit)
Approx. Gross Floor Area: 57.00 sqm |
| 2 Bedroom B (Inner Unit)
Approx. Gross Floor Area: 66.50 sqm | 2 Bedroom C (Inner Unit)
Approx. Gross Floor Area: 65.50 sqm | 2 Bedroom D (Inner Unit)
Approx. Gross Floor Area: 65.50 sqm | 3 Bedroom A (End Unit)
Approx. Gross Floor Area: 84.50 sqm |

14th-15th & 24th-25th Floor Level Plan

- Plans reflected as visuals are not to scale.
- Actual configurations and features may vary per unit.
- Please check the specifications of the particular unit you are interested on purchasing with your seller.



Typical Floor

18

units per floor

Note: Standard policy regarding request for tandem shall apply.

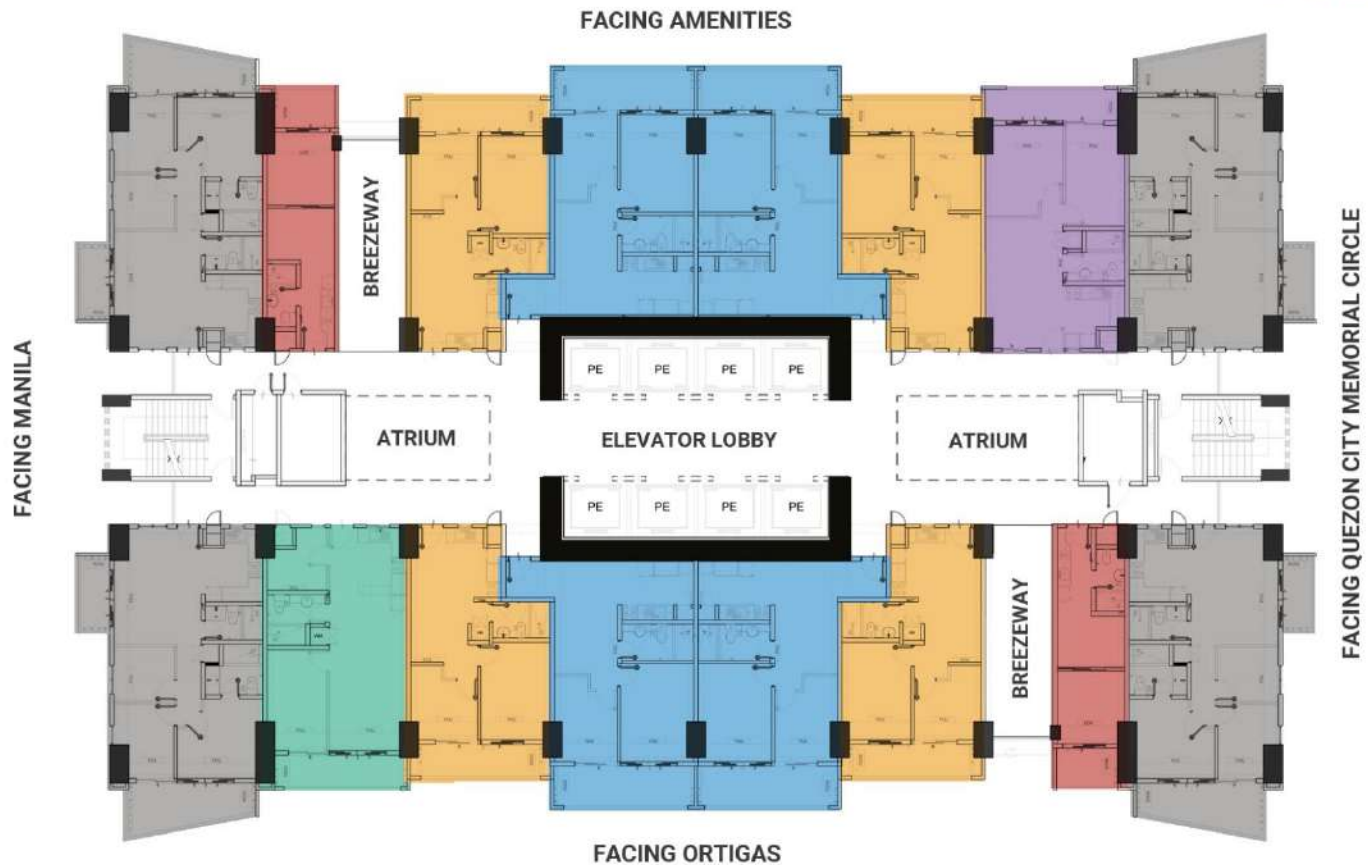


16th-17th & 26th-27th Floor Level Plan

- Plans reflected as visuals are not to scale.
- Actual configurations and features may vary per unit.
- Please check the specifications of the particular unit you are interested on purchasing with your seller.



Atrium Floor



- 1 Bedroom A (Inner Unit)**
 Approx. Gross Floor Area: 33.00 sqm
- 2 Bedroom A (Inner Unit)**
 Approx. Gross Floor Area: 57.00 sqm
- 2 Bedroom B (Inner Unit)**
 Approx. Gross Floor Area: 66.50 sqm
- 2 Bedroom C (Inner Unit)**
 Approx. Gross Floor Area: 65.50 sqm
- 2 Bedroom D (Inner Unit)**
 Approx. Gross Floor Area: 65.50 sqm
- 3 Bedroom A (End Unit)**
 Approx. Gross Floor Area: 84.50 sqm

28th, 38th & 48th Floor Level Plan

- Plans reflected as visuals are not to scale.
- Actual configurations and features may vary per unit.
- Please check the specifications of the particular unit you are interested on purchasing with your seller.



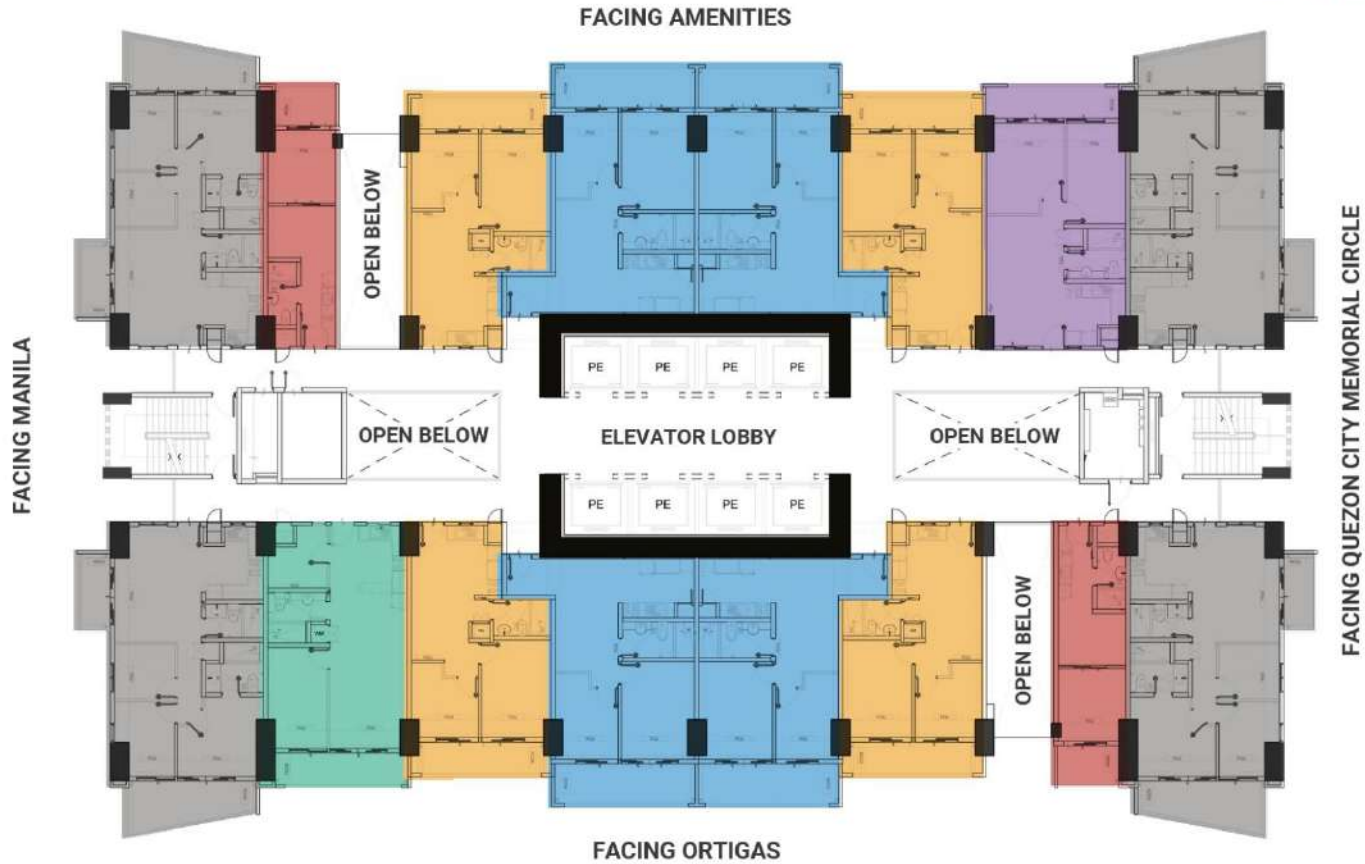
PANAY AVENUE

16

units per floor

Note: Standard policy regarding request for tandem shall apply.

Breezeway Floor



- | | | |
|--|--|--|
| 1 Bedroom A (Inner Unit)
Approx. Gross Floor Area: 33.00 sqm | 2 Bedroom A (Inner Unit)
Approx. Gross Floor Area: 57.00 sqm | 2 Bedroom B (Inner Unit)
Approx. Gross Floor Area: 66.50 sqm |
| 2 Bedroom C (Inner Unit)
Approx. Gross Floor Area: 65.50 sqm | 2 Bedroom D (Inner Unit)
Approx. Gross Floor Area: 65.50 sqm | 3 Bedroom A (End Unit)
Approx. Gross Floor Area: 84.50 sqm |

29th-30th, 39th-40th & 49th-50th Floor Level Plan

- Plans reflected as visuals are not to scale.
- Actual configurations and features may vary per unit.
- Please check the specifications of the particular unit you are interested in purchasing with your seller.

16

units per floor

Note: Standard policy regarding request for tandem shall apply.

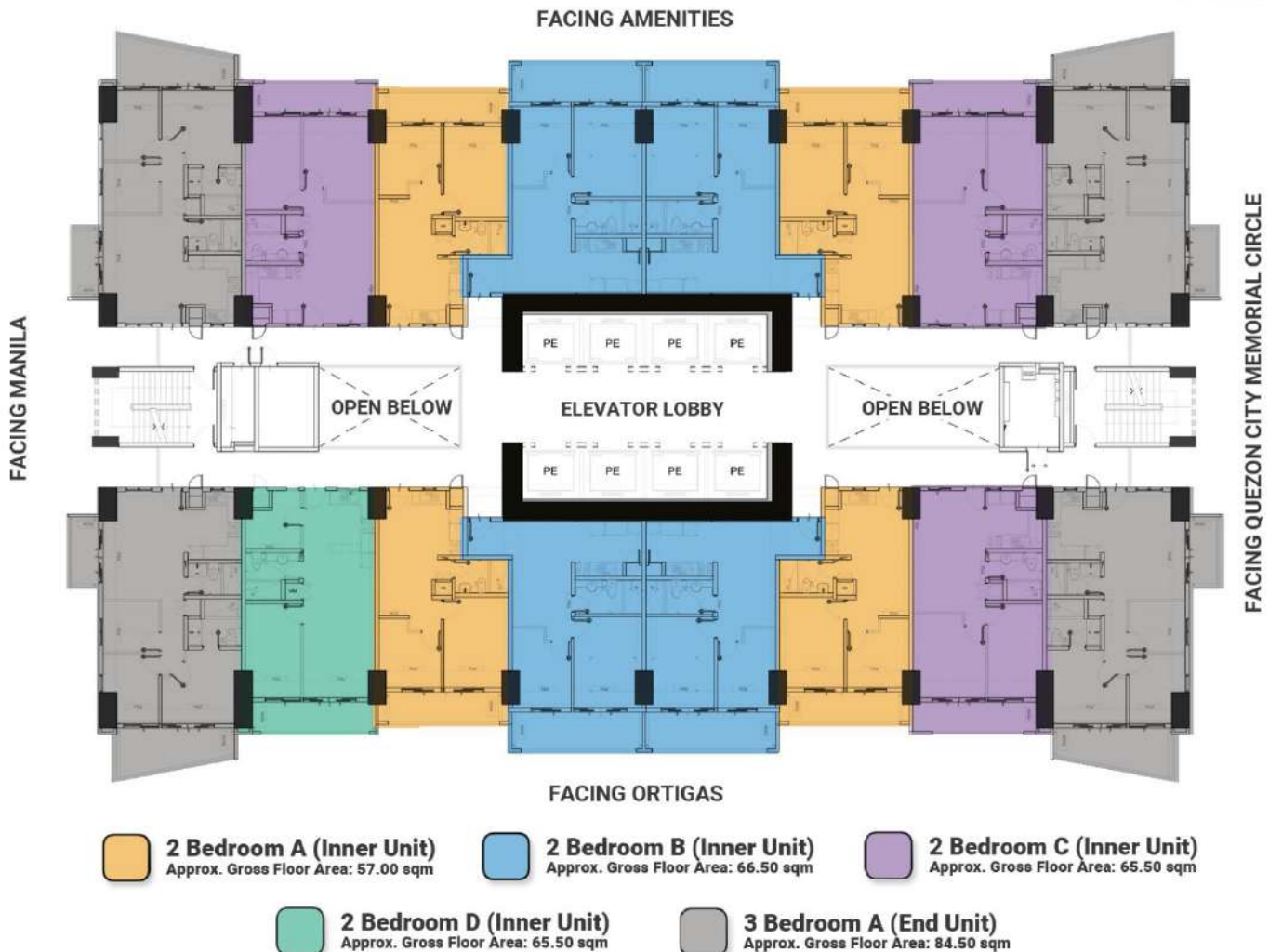


Typical Floor

16

units per floor

Note: Standard policy regarding request for tandem shall apply.



31st-32nd, 41st-42nd & PH Floor Level Plan

- Plans reflected as visuals are not to scale.
- Actual configurations and features may vary per unit.
- Please check the specifications of the particular unit you are interested on purchasing with your seller.



1 Bedroom A

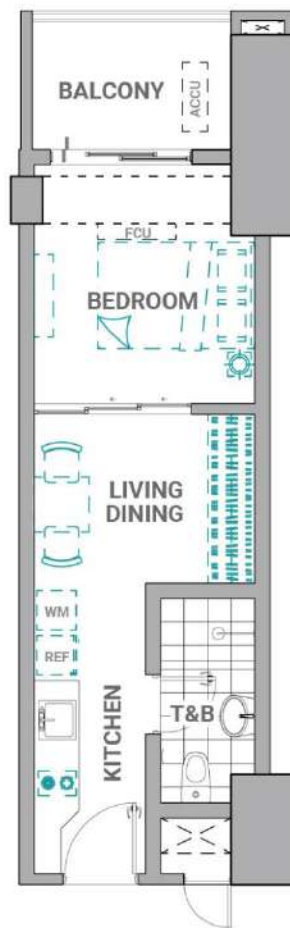
Location Inner Unit

Floor Level 2nd – PH Floor

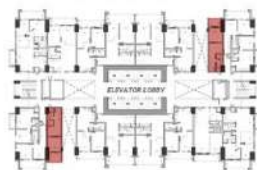
No. of Units 59 units

Unit Area 28.50 sqm

Gross Area 33.00 sqm



FACING AMENITIES



FACING ORTIGAS SKYLINE



1-BEDROOM A INNER UNIT

AREA ALLOCATION

LIVING & DINING	7.00 sqm
KITCHEN	6.50
BEDROOM	10.00
TOILET & BATH	5.00
BALCONY	4.50

APPROX. GROSS FLOOR AREA: 33.00 sqm

- ALL UNITS OF THE CRESTMONT ONLY COME WITH PROVISION FOR SPLIT-TYPE AIR-CONDITIONING SYSTEMS.
- FURNITURE AND APPLIANCES ARE NOT INCLUDED.
- DIMENSIONS AND AREAS MAY VARY BASED ON ACTUAL SITE CONDITION.
- KEY PLAN IS BASED ON TYPICAL FLOOR.

1 Bedroom B

Location End Unit

Floor Level 2nd – 27th Floor

No. of Units 49 units

Unit Area 31.50 sqm

Gross Area 36.00 sqm



1-BEDROOM B INNER UNIT

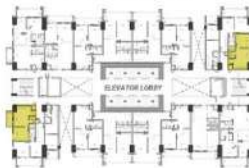
AREA ALLOCATION

LIVING & DINING	10.90 sqm
KITCHEN	7.40
BEDROOM	9.70
TOILET & BATH	3.50
BALCONY	4.50

APPROX. GROSS FLOOR AREA: 36.00 sqm

- ALL UNITS OF THE CRESTMONT ONLY COME WITH PROVISION FOR SPLIT-TYPE AIR-CONDITIONING SYSTEMS.
- FURNITURE AND APPLIANCES ARE NOT INCLUDED.
- DIMENSIONS AND AREAS MAY VARY BASED ON ACTUAL SITE CONDITION.
- KEY PLAN IS BASED ON TYPICAL FLOOR.

FACING AMENITIES



FACING ORTIGAS SKYLINE



1 Bedroom C

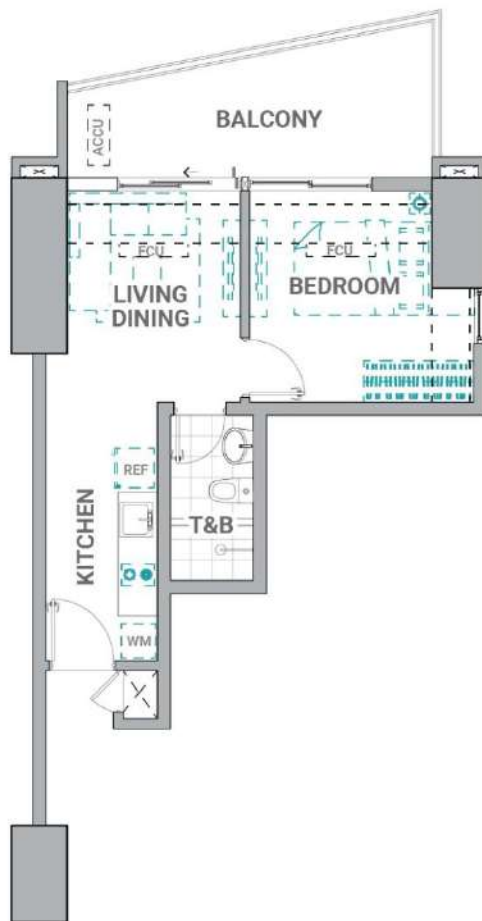
Location End Unit

Floor Level 7th – 27th Floor

No. of Units 40 units

Unit Area 32.50 sqm

Gross Area 42.50 sqm



1-BEDROOM C END UNIT

AREA ALLOCATION

LIVING & DINING	10.00 sqm
KITCHEN	7.25
BEDROOM	11.75
TOILET & BATH	3.50
BALCONY	10.00

APPROX. GROSS FLOOR AREA: 42.50 sqm

- ALL UNITS OF THE CRESTMONT ONLY COME WITH PROVISION FOR SPLIT-TYPE AIR-CONDITIONING SYSTEMS.
- FURNITURE AND APPLIANCES ARE NOT INCLUDED.
- DIMENSIONS AND AREAS MAY VARY BASED ON ACTUAL SITE CONDITION.
- KEY PLAN IS BASED ON TYPICAL FLOOR.



1 Bedroom C (Podium)

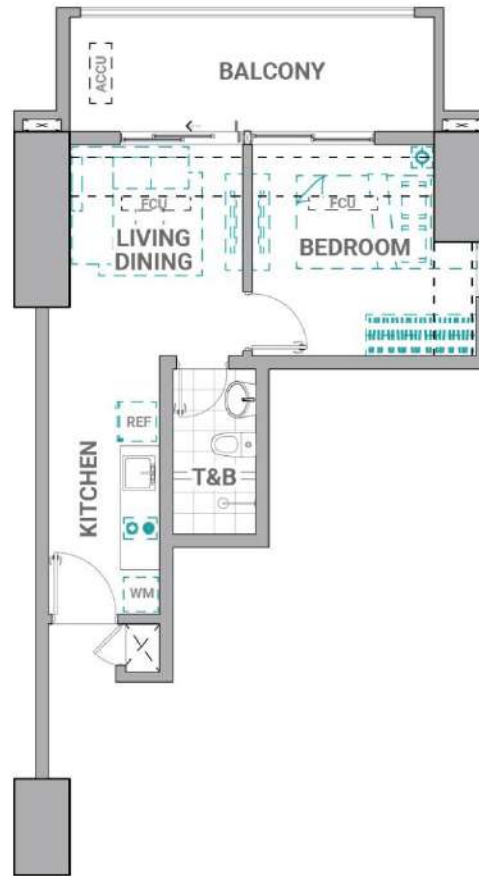
Location End Unit

Floor Level 2nd – 6th Floor

No. of Units 9 units

Unit Area 32.50 sqm

Gross Area 42.50 sqm



1-BEDROOM C PODIUM

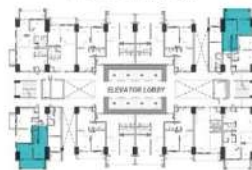
AREA ALLOCATION

LIVING & DINING	10.00 sqm
KITCHEN	7.25
BEDROOM	11.75
TOILET & BATH	3.50
BALCONY	10.00

APPROX. GROSS FLOOR AREA: 42.50 sqm

- ALL UNITS OF THE CRESTMONT ONLY COME WITH PROVISION FOR SPLIT-TYPE AIR-CONDITIONING SYSTEMS.
- FURNITURE AND APPLIANCES ARE NOT INCLUDED.
- DIMENSIONS AND AREAS MAY VARY BASED ON ACTUAL SITE CONDITION.
- KEY PLAN IS BASED ON TYPICAL FLOOR.

FACING AMENITIES



FACING ORTIGAS SKYLINE



EFFECTIVE JULY 2019

Floor plans reflected as visuals are not to scale. Actual configurations and features may vary per unit. Please check the unit specifications with your seller.

2 Bedroom A

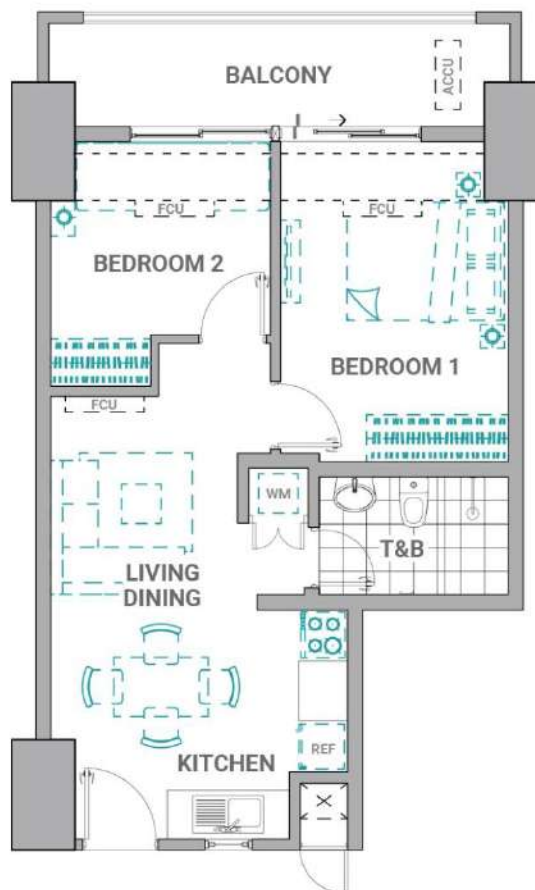
Location Inner Unit

Floor Level 2nd - PH Floor

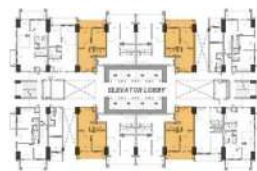
No. of Units 193 units

Unit Area 48.50 sqm

Gross Area 57.00 sqm



FACING AMENITIES



FACING ORTIGAS SKYLINE

2-BEDROOM A INNER UNIT

AREA ALLOCATION

LIVING & DINING	13.70 sqm
KITCHEN	8.50
BEDROOM 1	13.10
BEDROOM 2	8.90
TOILET & BATH	4.30
BALCONY	8.50

APPROX. GROSS FLOOR AREA: 57.00 sqm

- ALL UNITS OF THE CRESTMONT ONLY COME WITH PROVISION FOR SPLIT-TYPE AIR-CONDITIONING SYSTEMS.
- FURNITURE AND APPLIANCES ARE NOT INCLUDED.
- DIMENSIONS AND AREAS MAY VARY BASED ON ACTUAL SITE CONDITION.
- KEY PLAN IS BASED ON TYPICAL FLOOR.

2 Bedroom B

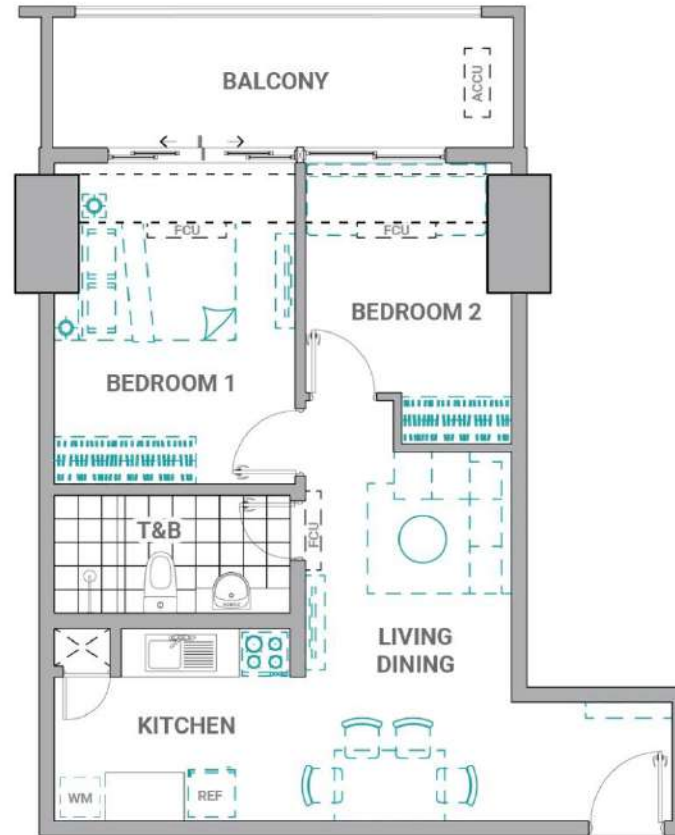
Location Inner Unit

Floor Level 2nd – PH Floor

No. of Units 196 units

Unit Area 56.00 sqm

Gross Area 66.50 sqm



2-BEDROOM B INNER UNIT

AREA ALLOCATION

LIVING & DINING	18.30 sqm
KITCHEN	8.70
BEDROOM 1	14.00
BEDROOM 2	9.70
TOILET & BATH	5.30
BALCONY	10.50

APPROX. GROSS FLOOR AREA: 66.50 sqm

- ALL UNITS OF THE CRESTMONT ONLY COME WITH PROVISION FOR SPLIT-TYPE AIR-CONDITIONING SYSTEMS.
- FURNITURE AND APPLIANCES ARE NOT INCLUDED.
- DIMENSIONS AND AREAS MAY VARY BASED ON ACTUAL SITE CONDITION.
- KEY PLAN IS BASED ON TYPICAL FLOOR.



EFFECTIVE JULY 2019

Floor plans reflected as visuals are not to scale. Actual configurations and features may vary per unit. Please check the unit specifications with your seller.

2 Bedroom C

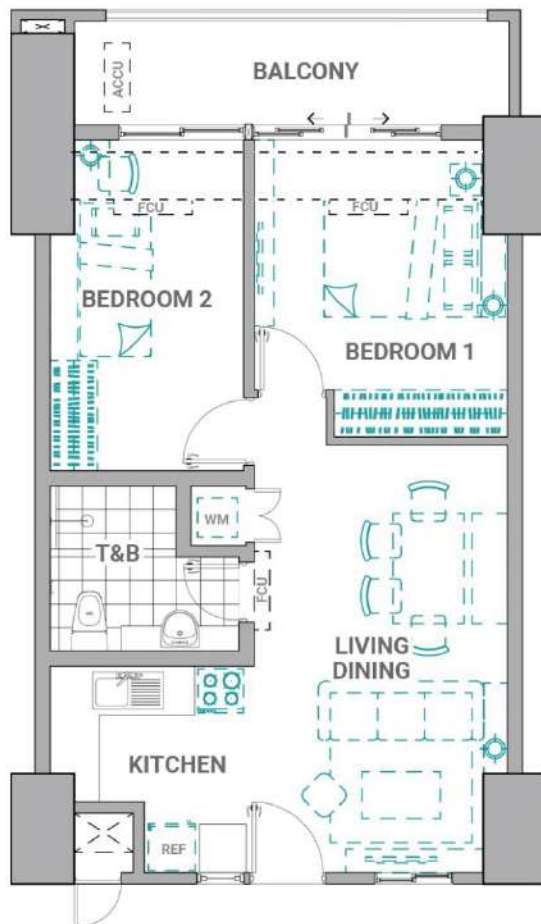
Location Inner Unit

Floor Level 2nd - PH Floor

No. of Units 87 units

Unit Area 57.50 sqm

Gross Area 65.50 sqm



2-BEDROOM C INNER UNIT

AREA ALLOCATION

LIVING & DINING	19.90 sqm
KITCHEN	7.40
BEDROOM 1	12.75
BEDROOM 2	11.55
TOILET & BATH	5.90
BALCONY	8.00

APPROX. GROSS FLOOR AREA: 65.50 sqm

- ALL UNITS OF THE CRESTMONT ONLY COME WITH PROVISION FOR SPLIT-TYPE AIR-CONDITIONING SYSTEMS.
- FURNITURE AND APPLIANCES ARE NOT INCLUDED.
- DIMENSIONS AND AREAS MAY VARY BASED ON ACTUAL SITE CONDITION.
- KEY PLAN IS BASED ON TYPICAL FLOOR.

2 Bedroom D (Open)

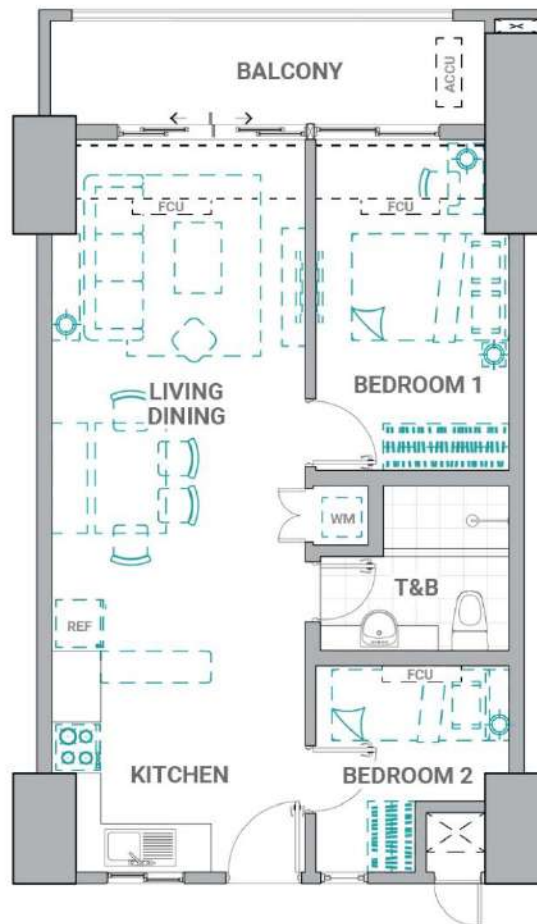
Location Inner Unit

Floor Level 2nd - PH Floor

No. of Units 47 units

Unit Area 57.50 sqm

Gross Area 65.50 sqm



2-BEDROOM D INNER UNIT

AREA ALLOCATION

LIVING & DINING	24.80 sqm
KITCHEN	7.70
BEDROOM 1	11.65
BEDROOM 2	7.45
TOILET & BATH	5.90
BALCONY	8.00

APPROX. GROSS FLOOR AREA: 65.50 sqm

- ALL UNITS OF THE CRESTMONT ONLY COME WITH PROVISION FOR SPLIT-TYPE AIR-CONDITIONING SYSTEMS.
- FURNITURE AND APPLIANCES ARE NOT INCLUDED.
- DIMENSIONS AND AREAS MAY VARY BASED ON ACTUAL SITE CONDITION.
- KEY PLAN IS BASED ON TYPICAL FLOOR.

EFFECTIVE JULY 2019

Floor plans reflected as visuals are not to scale. Actual configurations and features may vary per unit. Please check the unit specifications with your seller.

3 Bedroom

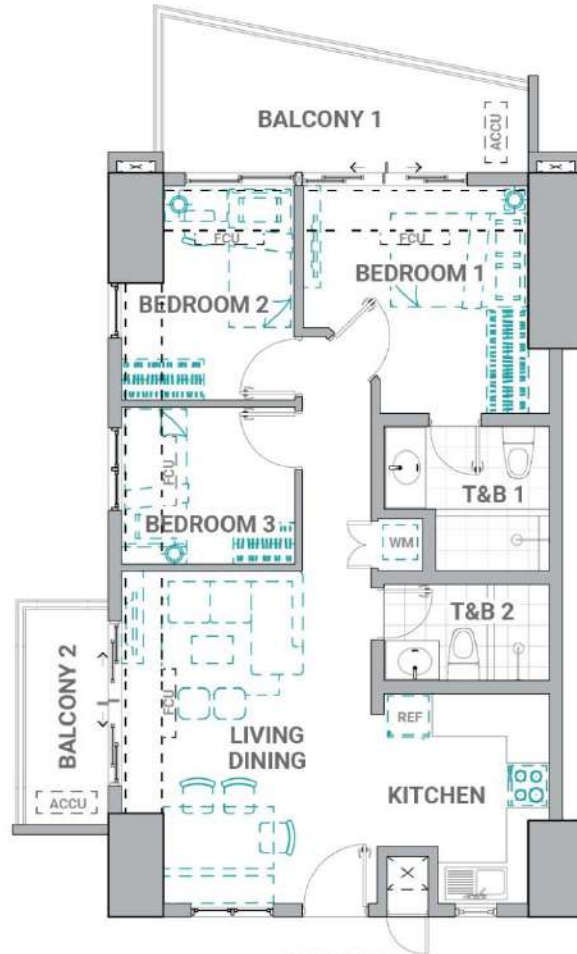
Location End Unit

Floor Level 7th – PH Floor

No. of Units 136 units

Unit Area 70.00 sqm

Gross Area 84.50 sqm



3-BEDROOM A END UNIT

AREA ALLOCATION

LIVING & DINING	23.30 sqm
KITCHEN	8.60
BEDROOM 1	12.25
BEDROOM 2	9.25
BEDROOM 3	6.60
TOILET & BATH 1	5.90
TOILET & BATH 2	4.10
BALCONY 1	10.00
BALCONY 2	4.50

APPROX. GROSS FLOOR AREA: 84.50 sqm



- ALL UNITS OF THE CRESTMONT ONLY COME WITH PROVISION FOR SPLIT-TYPE AIR-CONDITIONING SYSTEMS.
- FURNITURE AND APPLIANCES ARE NOT INCLUDED.
- DIMENSIONS AND AREAS MAY VARY BASED ON ACTUAL SITE CONDITION.
- KEY PLAN IS BASED ON TYPICAL FLOOR.

EFFECTIVE JULY 2019

Floor plans reflected as visuals are not to scale. Actual configurations and features may vary per unit. Please check the unit specifications with your seller.

3 Bedroom (Podium)

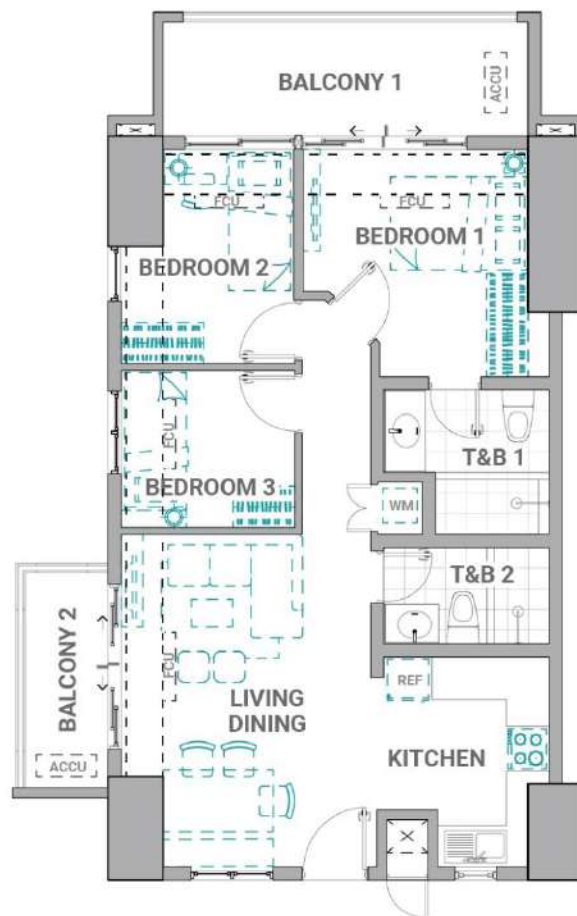
Location End Unit

Floor Level 2nd – 6th Floor

No. of Units 8 units

Unit Area 70.00 sqm

Gross Area 84.50 sqm



FACING AMENITIES



FACING ORTIGAS SKYLINE

3-BEDROOM A PODIUM

AREA ALLOCATION

LIVING & DINING	23.30 sqm
KITCHEN	8.60
BEDROOM 1	12.25
BEDROOM 2	9.25
BEDROOM 3	6.60
TOILET & BATH 1	5.90
TOILET & BATH 2	4.10
BALCONY 1	10.00
BALCONY 2	4.50

APPROX. GROSS FLOOR AREA: 84.50 sqm

- ALL UNITS OF THE CRESTMONT ONLY COME WITH PROVISION FOR SPLIT-TYPE AIR-CONDITIONING SYSTEMS.
- FURNITURE AND APPLIANCES ARE NOT INCLUDED.
- DIMENSIONS AND AREAS MAY VARY BASED ON ACTUAL SITE CONDITION.
- KEY PLAN IS BASED ON TYPICAL FLOOR.

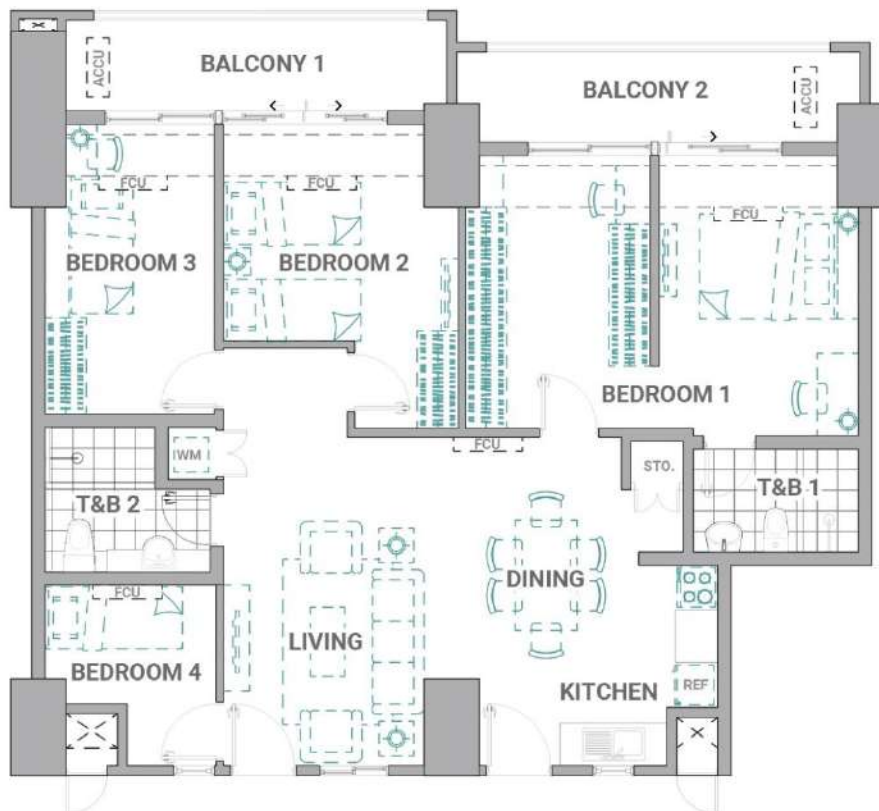
Tandem Layout

Location Inner Unit

Floor Level 2nd - PH Floor

Unit Area 106.00 sqm

Gross Area 122.50 sqm



TANDEM UNIT A

AREA ALLOCATION

LIVING & DINING	29.00 sqm
KITCHEN	8.60
BEDROOM 1	25.00
BEDROOM 2	14.00
BEDROOM 3	11.70
BEDROOM 4	7.50
TOILET & BATH 1	4.30
TOILET & BATH 2	5.90
BALCONY 1	8.50
BALCONY 2	8.00

APPROX. GROSS FLOOR AREA: 122.50 sqm

FACING AMENITIES



FACING ORTIGAS SKYLINE



- ALL UNITS OF THE CRESTMONT ONLY COME WITH PROVISION FOR SPLIT-TYPE AIR-CONDITIONING SYSTEMS.
- FURNITURE AND APPLIANCES ARE NOT INCLUDED.
- DIMENSIONS AND AREAS MAY VARY BASED ON ACTUAL SITE CONDITION.
- KEY PLAN IS BASED ON TYPICAL FLOOR.

EFFECTIVE JULY 2019

Floor plans reflected as visuals are not to scale. Actual configurations and features may vary per unit. Please check the unit specifications with your seller.

RESIDENTIAL UNITS

PARTICULARS	1 Bedroom			2 Bedroom			3 Bedroom
	28.50 sqm	31.50 sqm	32.50 sqm	48.50 sqm	56.00 sqm	57.50 sqm	70.00 sqm

FLOOR FINISHES

<i>Living, Dining and Kitchen</i>	Vinyl plank with baseboard	Ceramic tiles with baseboard
<i>Bedroom</i>	Vinyl plank with baseboard	
<i>Balcony</i>	Ceramic tiles with pebble washout	
<i>Toilet & Bath</i>	Unglazed ceramic tiles	

WALL FINISHES

<i>Interior Walls</i>	Painted finish
<i>Toilet</i>	Ceramic tiles; Painted cement finish above wall tiles

CEILING FINISHES

<i>Living, Dining and Kitchen</i>	Painted plain cement finish
<i>Bedroom</i>	Painted plain cement finish
<i>Toilet & Bath</i>	Painted ficem board ceiling

DOORS

<i>Entrance Door</i>	Wooden panel door on metal jamb
<i>Bedroom Door</i>	Sliding door with glass panel Wooden panel door on metal jamb
<i>Toilet Door</i>	Wooden door with half louver on metal jamb
<i>Balcony Door</i>	Aluminum framed glass panel with insect screen

WINDOWS

<i>Windows</i>	Aluminum framed glass panel with insect screen (except awning windows)
----------------	--

Specifications are subject to change without prior notice.

Turnover Finishes

RESIDENTIAL UNITS

PARTICULARS	1 Bedroom			2 Bedroom			3 Bedroom
	28.50 sqm	31.50 sqm	32.50 sqm	48.50 sqm	56.00 sqm	57.50 sqm	70.00 sqm

FINISHING HARDWARE

Main Door Lockset	Mortise lever type keyed lockset
Bedroom Lockset	Lever type keyed lockset
Toilet Lockset	Lever type privacy lockset

TOILET AND KITCHEN FIXTURES

Water Closet	Top-flush, one-piece type		
Lavatory	Wall-hung type lavatory	Semi-counter top basin	Undercounter type and wall hung type lavatory
Shower Head and Fittings	Exposed rain shower and mixer type		
Soap Holder	Niche at wall		
Kitchen Sink	Stainless steel, single bowl	Stainless steel, single bowl with one-side drain board	
Kitchen Faucet	Gooseneck type	Rotary lever type	
Toilet Exhaust	Ceiling-mounted exhaust fan		
Kitchen Exhaust	Range hood provision		

AIR CONDITIONING

Air Conditioning	Single split type air condition (owners supplied)	Multi-split type air condition (owners supplied)	Single split type air condition and multi-split type air condition (owners supplied)
------------------	---	--	--

SPECIALTIES

Toilet & Bath	Mirror cabinet	Granite finish lavatory countertop
Kitchen	Granite finish kitchen countertop with cabinet system	

Specifications are subject to change without prior notice.

Turnover Finishes

COMMON AREA

FLOOR FINISH

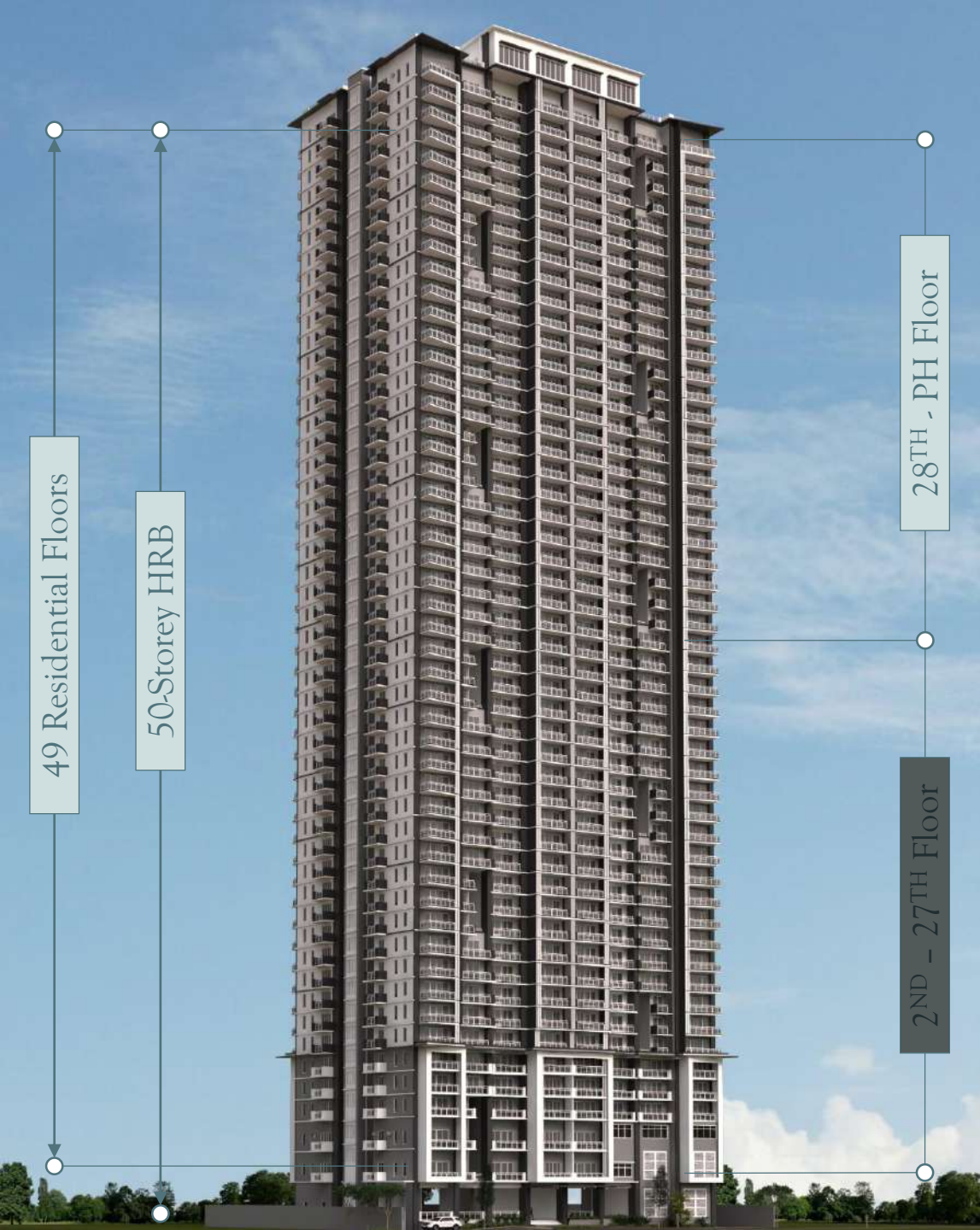
Stairs	Ceramic tile with pebble washout
Stairwell	Straight to finish concrete with steel angle nosing guard
Hallway / Corridor	Ceramic tile with pebble washout
Roof Deck	Ceramic tile with pebble washout
Driveway / Parking	Straight to finish concrete

WALL FINISH

Exterior Wall Finish	Combination of plain and textured paint on plain cement finish
Hallway	Painted plain cement finish
Stairwell	Painted plain cement finish

CEILING FINISH

Hallway	Painted plain cement finish with ficem / gypsum board cladding
Stairwell	Painted plain cement finish
Driveway / Parking	Straight to finish concrete



49 Residential Floors

50-Storey HRB

28TH - PH Floor

2ND - 27TH Floor

OVERALL

2nd - PH Floor

824 units

Basements 1 - 7
Parking Levels

371 slots

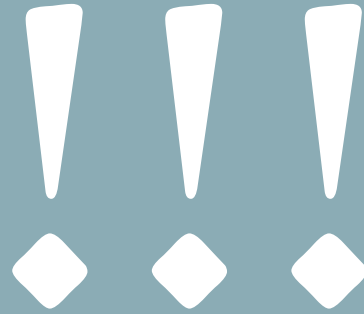
Unit Mix : Overall

UNIT TYPE	UNIT AREA	BALCONY AREA	GROSS AREA	NO. OF UNITS
1BR A	28.50	4.50	33.00	59
1BR B	31.50	4.50	36.00	49
1BR C	32.50	10.00	42.50	40
1BR C (Podium)	32.50	10.00	42.50	9
2BR A	48.50	8.50	57.00	193
2BR B	56.00	10.50	66.50	196
2BR C	57.50	8.00	65.50	87
2BR D	57.50	8.00	65.50	47
3BR	70.00	14.50	84.50	136
3BR (Podium)	70.00	14.50	84.50	8
			TOTAL	824

RFO Dates

FLOORS	SECTIONAL RFO DATES
48 th – PH Floors	December 2024
43 rd – 47 th Floors	January 2025
38 th – 42 nd Floors	February 2025
33 rd – 37 th Floors	March 2025
28 th – 32 nd Floors	April 2025
23 rd – 27 th Floors	May 2025
18 th – 22 nd Floors	June 2025
12 th – 17 th Floors	July 2025
7 th – 11 th Floors	August 2025
2 nd – 6 th Floors	September 2025

RFO of parking slot shall be the same as the RFO of corresponding unit.



In its continuing desire to improve the project, DMCI Homes reserves the right to change product features without prior notice and approval. Floor plans and perspectives depicted in this material are for demonstration purposes only and should not be relied upon as final project plans.



The Crestmont bears the DMCI Homes Quality Seal, which represents our commitment to deliver homes that are built to last. Your new home is subject to our proprietary quality management system, and comes with a 2-year limited warranty*.

**Property developers typically provide a one-year warranty. DMCI Homes' 2-year limited warranty covers most unit deliverables, except operable items subject to daily wear and tear.*

Terms and conditions apply.

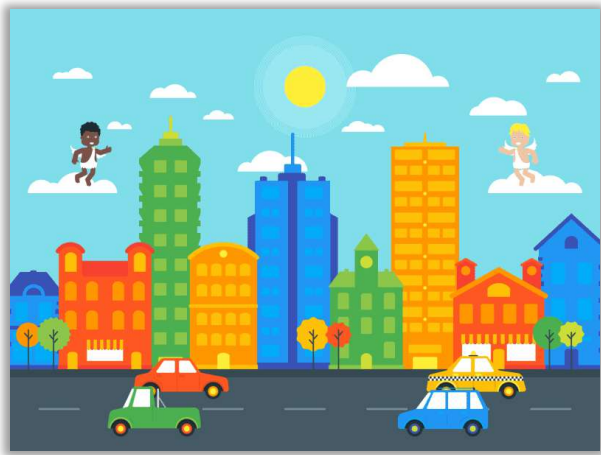
E

xcellence in Quality



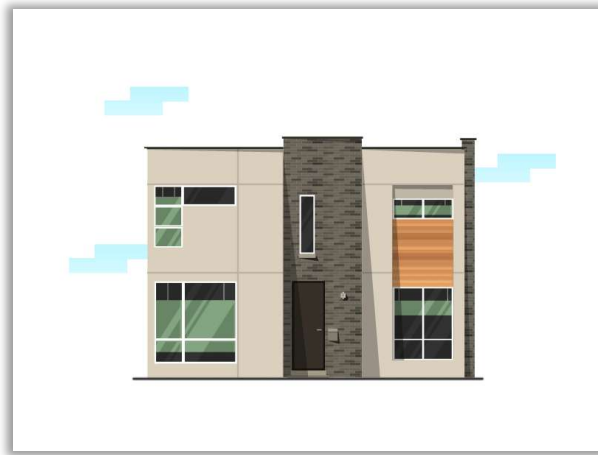
C
entral
Location

R
einventing
Design



C

Central
Location



R

Reinventing
Design



E

Excellence in
Quality

